



**VAN MERKSTEIJN**  
**PLASTICS**

GEKKO FIX  




**Collection 2015**

Window foils | Self adhesive foils

Van Merksteijn Plastics (VMP) is part of a large industrial group known for being production-driven and one step ahead of the competition. We took over the production activities of the former Alkor-Venilia group, based in the Netherlands (EU). We manufacture a wide range of self adhesive and static decorative films under the brand name GEKKOFIX®, as well as various other industrial products. Our products all meet the necessary quality standards and we are leaders in product development, offering a range that is known to be the best in the market.

Our adhesive film products are divided into several product groups, each with its own specifications and quality levels. We have carefully selected our designs based on their appearance and taking into account demands in the market. Our range includes more than 200 designs, each available in various different roll sizes. We are confident that this range includes everything you need for your collection. Naturally it is also possible to have your own designs manufactured.

We are proud to present you with our 2015 Collection and look forward to starting a partnership with you!

Sincerely,

The Management Team  
Van Merksteijn Plastics B.V.

Van Merksteijn Plastics B.V.  
Verzetslaan 20  
P.O. Box 1350  
NL-7500 BJ Enschede

**T** +31 (0) 53 428 99 00  
**F** +31 (0) 53 428 92 00  
**E** info@vanmerksteijnplastics.nl  
**W** www.gekkofix.nl

<b>Chamber of Commerce</b>	05082330
<b>VAT</b>	NL817353884B01
<b>ABN/AMRO Bank</b>	58.00.25.586
<b>IBAN</b>	NL03ABNA0580025586
<b>Swift/BIC</b>	ABNANL2A

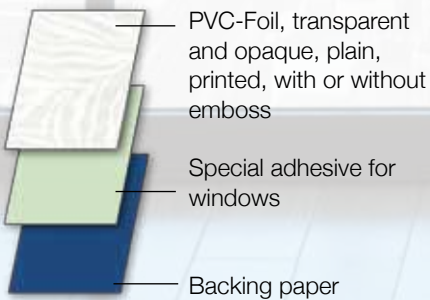
GEKKOFIX® is a brand name owned by Van Merksteijn Plastics B.V.

All transactions are fully in accordance with the general conditions of Van Merksteijn Plastics B.V. A free copy can be sent upon request. Al onze transacties geschieden volgens de algemene voorwaarden van Van Merksteijn Plastics B.V. Een exemplaar kan u kosteloos worden toegezonden.

# SELF ADHESIVE WINDOW FOIL Vitrodecor



## CONSTRUCTION



## CHARACTERISTICS

- Decorative privacy foil
- Very easy to use
- Lightfast
- Easy to clean
- Many different designs available
- Easy to apply with water

SAND



cm ↔	m ↻		m ↻	
<b>45</b>	2	10112	15	10113
<b>67,5</b>	2	10356	15	11101
<b>90</b>	2	11103	15	11102

TRANSPARENT WHITE



cm ↔	m ↻		m ↻	
<b>45</b>	2	10279	15	10280
<b>67,5</b>	2	10281	15	10512
<b>90</b>	2	10514	15	10513

# SELF ADHESIVE WINDOW FOIL Vitrodecor



WATERDROP



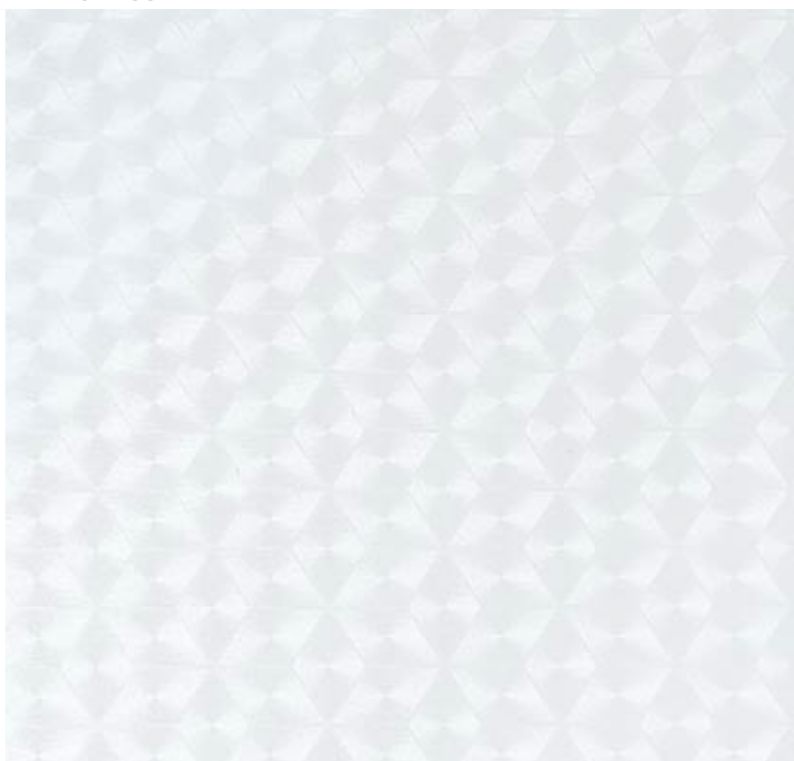
cm ↔	m ↗		m ↘	
45	2	10287	15	10286
67,5			15	10488
90			15	10490

WATERDROP BLUE



cm ↔	m ↗		m ↘	
45	2	10289	15	10288
67,5			15	10480
90			15	10482

RHOMBUS



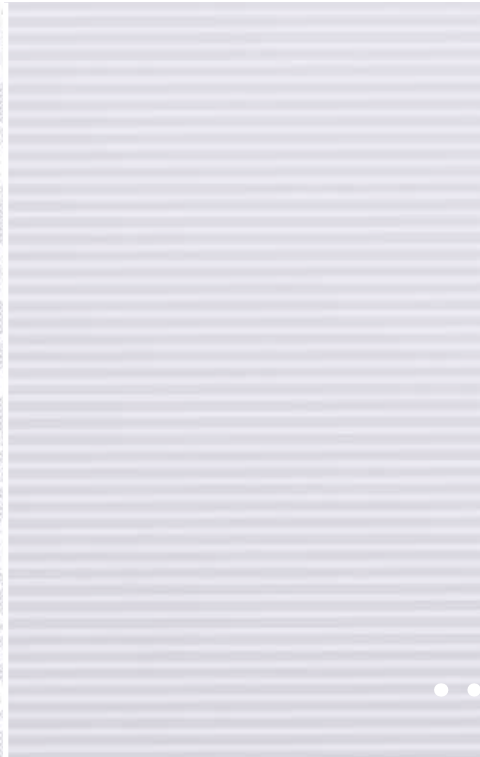
cm ↔	m ↗		m ↘	
45	2	11420	15	11419
67,5			15	11421
90			15	11423

ANNA WHITE



cm ↔	m	m
<b>45</b>	2 13548	15 13549

STRIPES



cm ↔	m	m
<b>45</b>	2 10952	15 10951
<b>67,5</b>		15 10953
<b>90</b>	2 10956	15 10955



JULIA WHITE



cm ↔	m	m
<b>45</b>	2 13550	15 13551



CIRCLE



cm ↔	m	m
<b>45</b>	2 10118	15 10119
<b>67,5</b>	2 11078	15 11077
<b>90</b>	2 11080	15 11079

# SELF ADHESIVE WINDOW FOIL Vitrodecor

## SQUARES



## TOULON



cm ↔	m	m	m	m
45	2	10004	15	10005
67,5	2	11412	15	11411
90	2	11414	15	11413

cm ↔	m	m	m	m
45	2	10122	15	10123
67,5	2	10153	15	10397
90			15	10398

## ICE FLOWERS



## DOTS



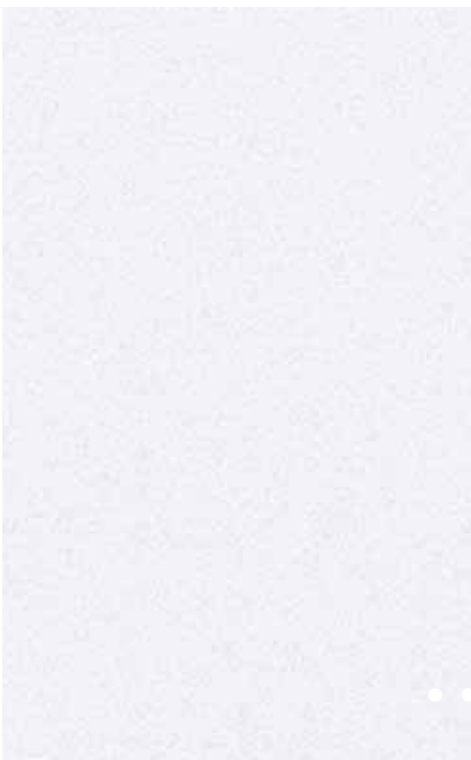
cm ↔	m	m	m	m
45	2	10006	15	10007
67,5	2	11404	15	11403
90			15	11405

cm ↔	m	m	m	m
45	2	10942	15	10941
67,5	2	10944	15	10943
90			15	10945

FROST



EMBOSSED WHITE MAT



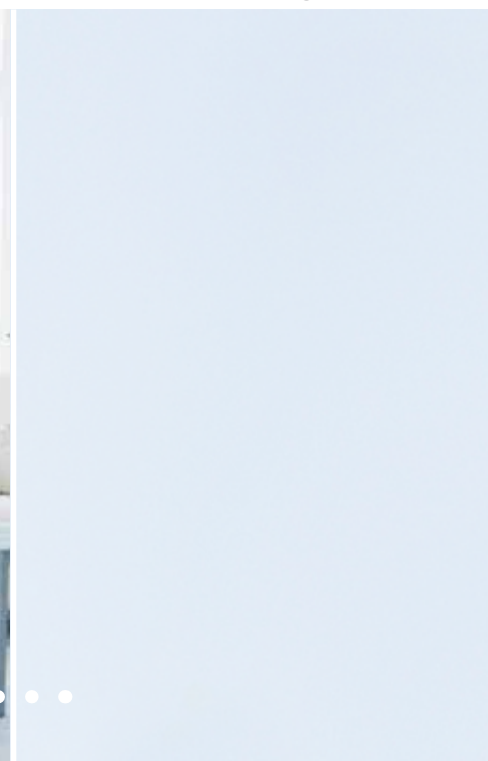
cm ↔	m ↻		m ↻	
<b>45</b>	2	10285	15	10284
<b>67,5</b>	2	10496	15	10496
<b>90</b>	2	10499	15	10498

cm ↔	m ↻		m ↻	
<b>45</b>	2	10116	15	10117
<b>67,5</b>	2	11086	15	11085
<b>90</b>	2	11087	15	11087

TRANSPARENT GLOSSY



TRANSPARENT MAT

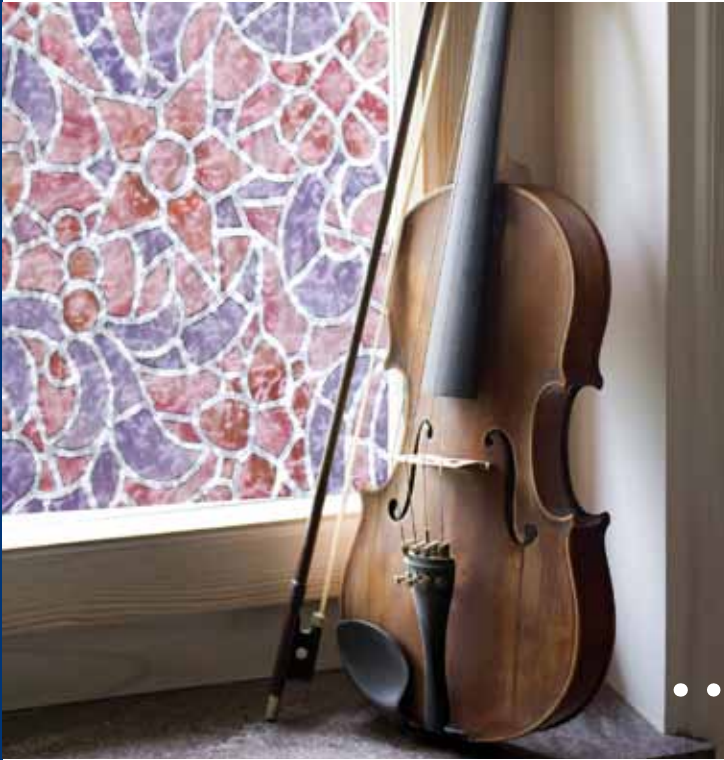


cm ↔	m ↻		m ↻	
<b>45</b>	2	10046	15	10047
<b>67,5</b>	2	11324	15	11323
<b>90</b>	2	11326	15	11325

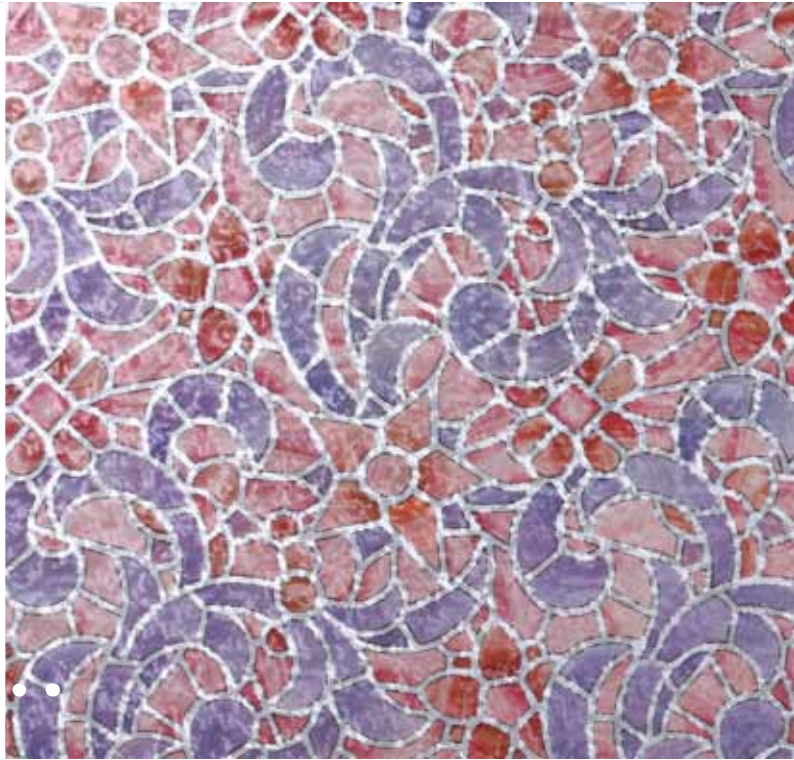
cm ↔	m ↻		m ↻	
<b>45</b>	2	10060	15	10061
<b>67,5</b>	2	11276	15	11275
<b>90</b>	2	11278	15	11277



SELF ADHESIVE WINDOW FOIL Vitrodecor

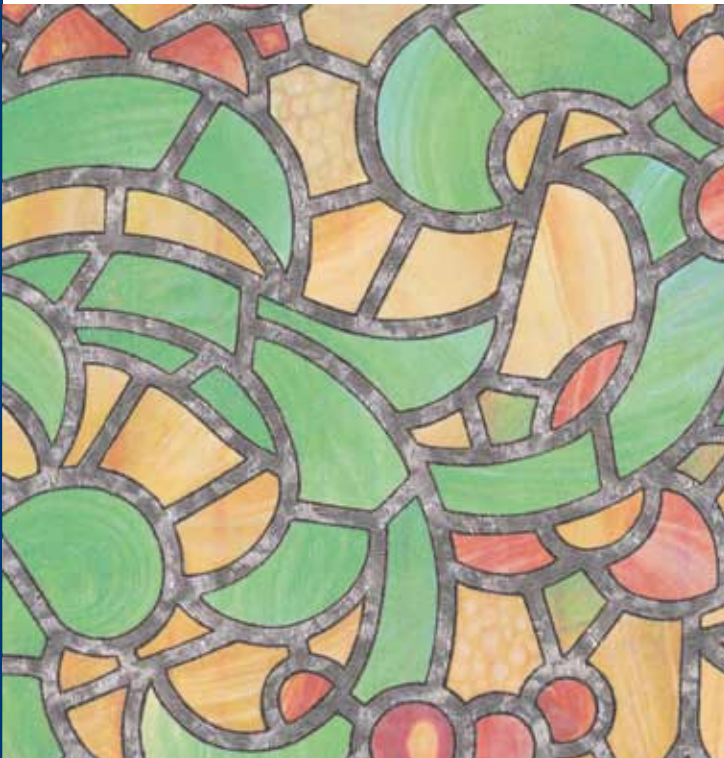


REIMS BLUE PINK



cm ↔	m		m	
45	2	10293	15	10292
67,5	2	10381	15	10381
90	2	10383	15	10383

REIMS GREEN YELLOW



TARGET



cm ↔	m		m	
45	2	10002	15	10003
67,5	2	10352	15	10425
90	2	10426	15	10426

cm ↔	m		m	
45	2	10962	15	10961
67,5	2	10963	15	10963
90	2	10965	15	10965

NIMES



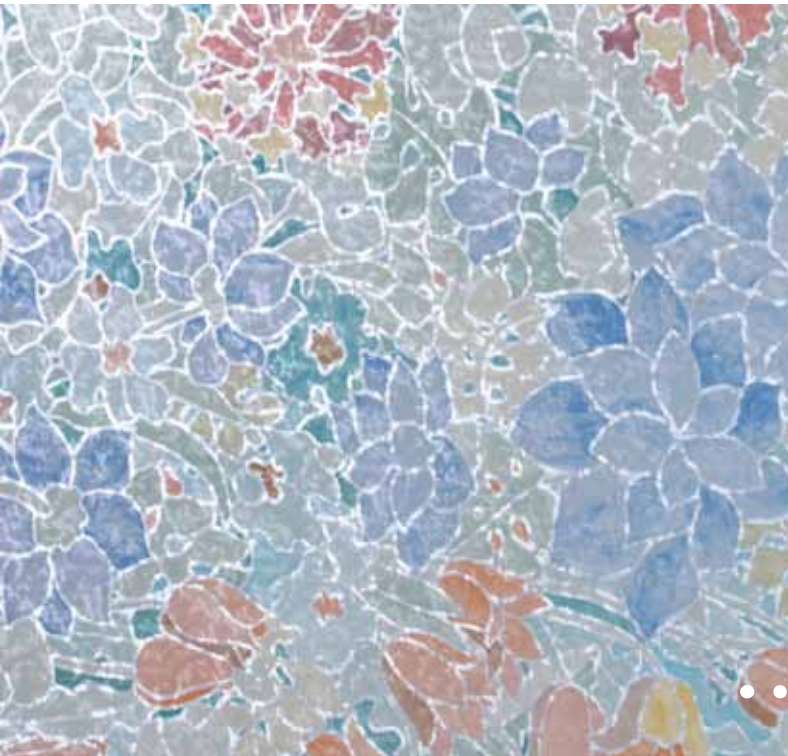
NANTES



cm ↔	m	m	m
45	2 10204	15 10205	
67,5	2 10726	15 10725	
90	2 10728	15 10727	

cm ↔	m	m	m
45	2 11814	15 11813	
67,5	2 11816	15 11815	
90		15 11817	

TULIPS



cm ↔	m	m	m
45	2 11794	15 11793	
67,5		15 11795	
90		15 11797	

# SELF ADHESIVE WINDOW FOIL Vitrodecor

AMIENS BLUE



cm ↔	m		m	
45	2	11834	15	11833
67,5			15	11835
90			15	11837

NIZZA



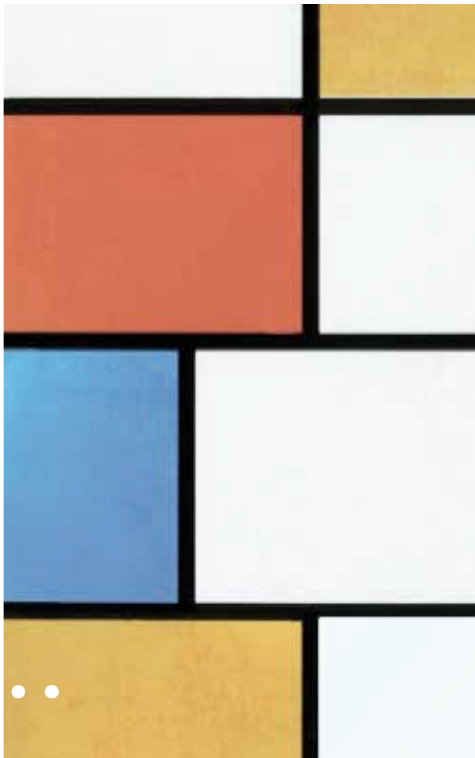
cm ↔	m		m	
45	2	11824	15	11823
67,5			15	11825
90			15	11827

FISHES



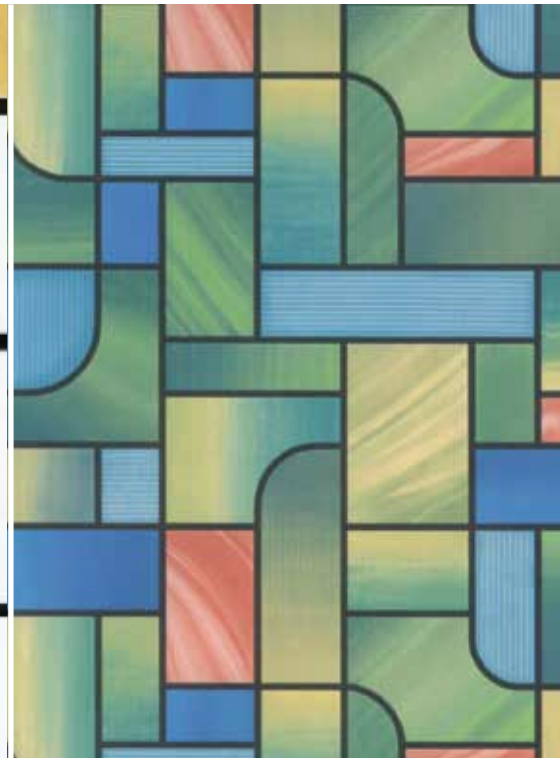
cm ↔	m		m	
45	2	10972	15	10971
67,5			15	10973
90			15	10975

MONDRIAN



cm ↔	m		m	
45	2	10278	15	10277
67,5			15	10519
90			15	10521

CHURCH



cm ↔	m		m	
45	2	10228	15	10227
67,5			15	10651
90			15	10653

CLOUDS



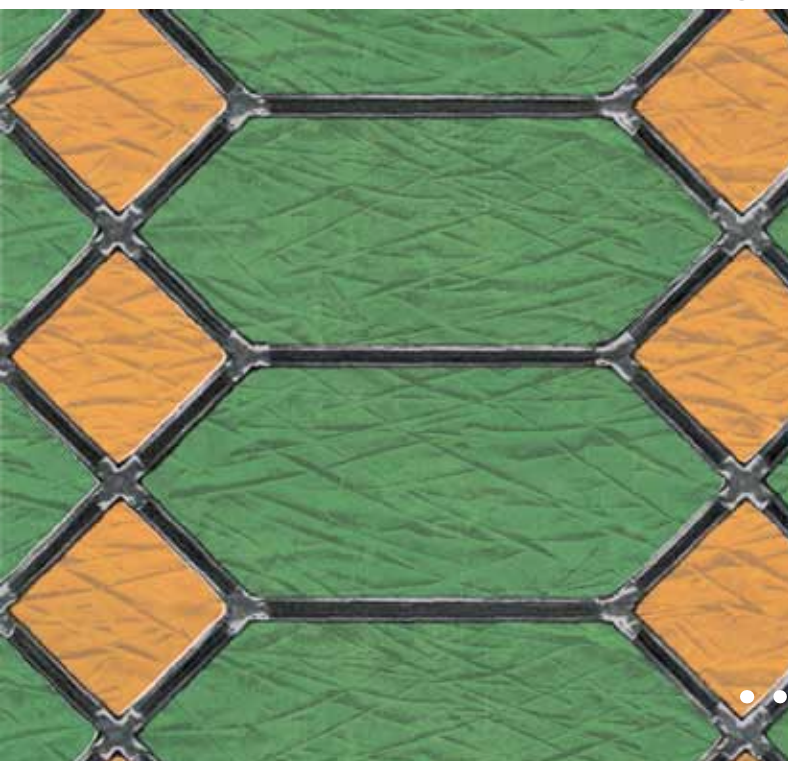
cm ↔	m	m
45	2 10276	15 10275
67,5		15 10527
90		15 10529

BARCELONA MULTI COLOURED



cm ↔	m	m
45	2 11804	15 11803
67,5	2 11806	15 11805
90		15 11807

RENNES



cm ↔	m	m
45	2 11734	15 11733
67,5		15 11735
90		15 11737





## CONSTRUCTION

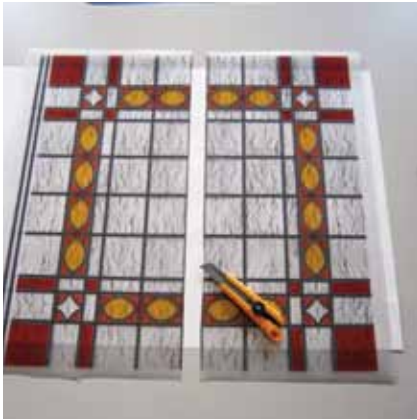


PVC-Foil transparent, printed, with or without emboss

Backing paper

## CHARACTERISTICS

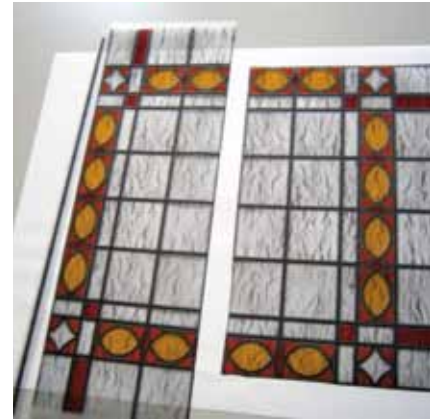
- Easy adjustable in size
- Stained Glass foil that fits any window
- Easy to clean
- Lightfast



Using a sharp cutter, you can use one of the lead lines to cut the shape in half, creating a base starting point. Feel free to cut on any of the lead lines or insert stripes from another part to adjust to any size.



You can cut off edges which will still preserve the image as it's intended. Extra leadlines are supplied as well, which can be applied in any direction.



You'll be able to apply a stained glass look and feel to almost any size or shape window.



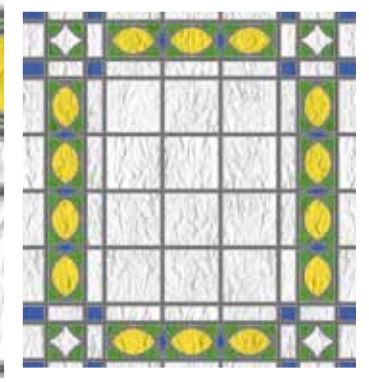
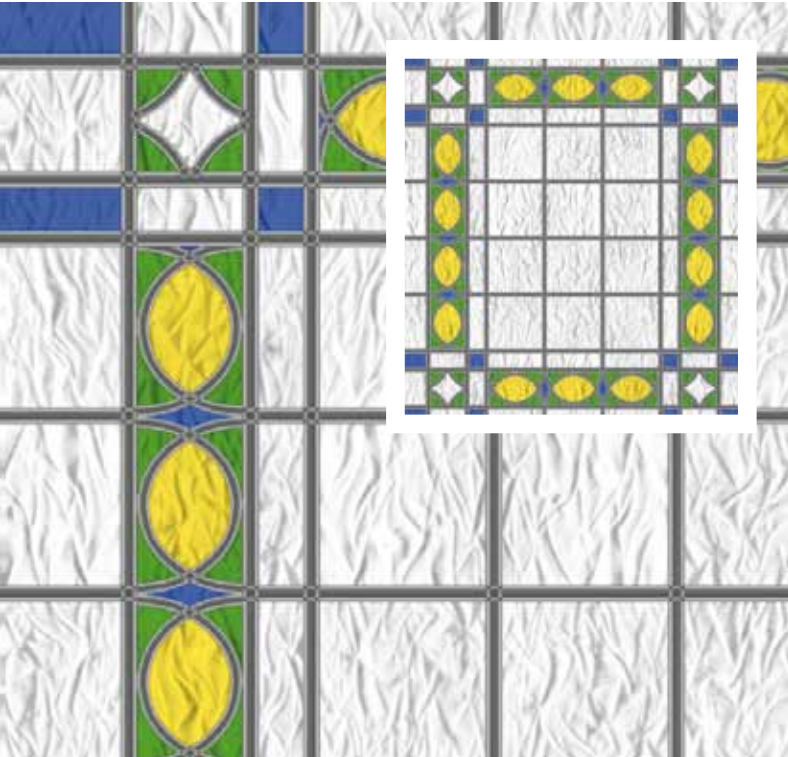
## STAINED GLASS

SPECIAL WINDOW FOILS



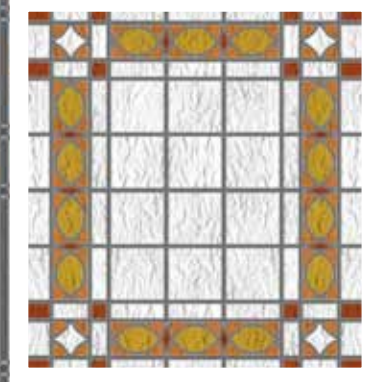
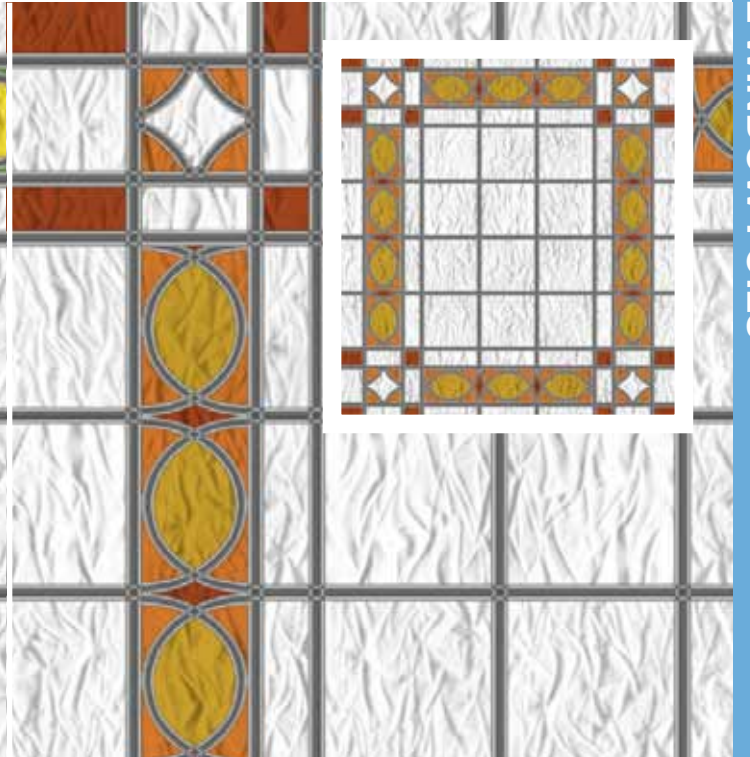
STAINED GLASS

STAINED GLASS BLUE GREEN



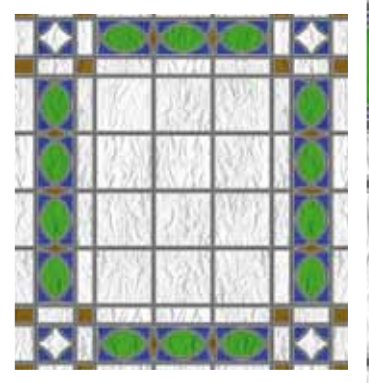
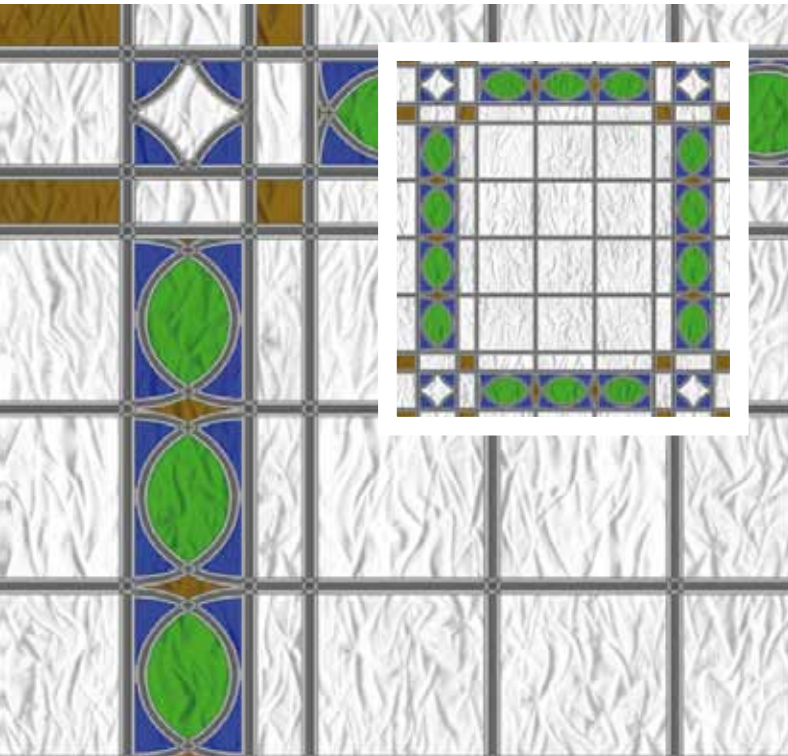
cm ↔ m   
**135** 0,55 12731

STAINED GLASS BROWN ORANGE



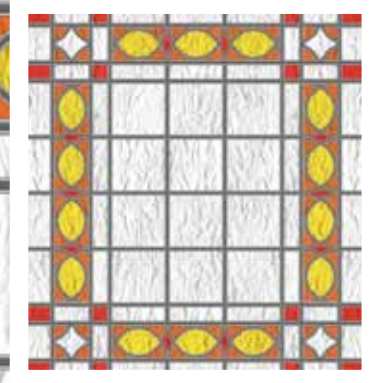
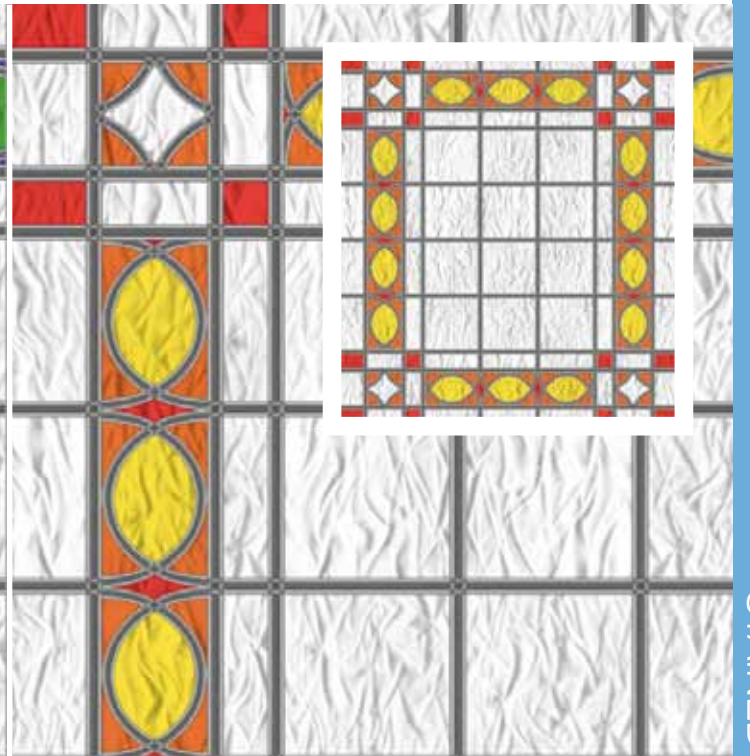
cm ↔ m   
**135** 0,55 12732

STAINED GLASS BLUE BROWN



cm ↔ m   
**135** 0,55 12733

STAINED GLASS RED ORANGE



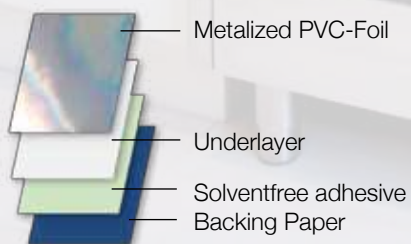
cm ↔ m   
**135** 0,55 12730



## METALLICS



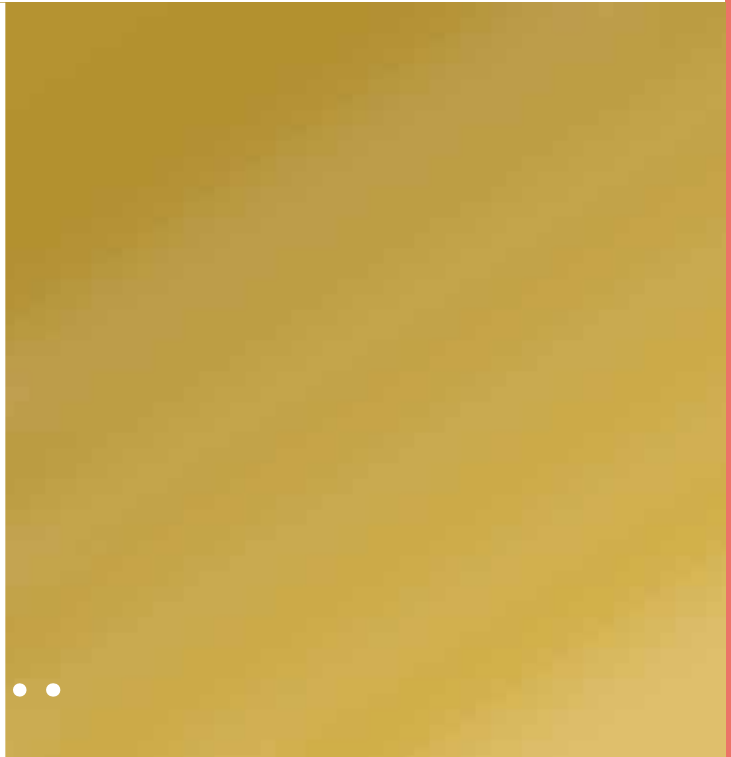
## CONSTRUCTION



## CHARACTERISTICS

- Scratchproof
- Brilliant optic
- Easy to clean
- Easy to use
- High class alternative for real metallic look

GOLD POLISHED



cm ↔	m ↻	m ↻
45	1,5 10295	15 10294
67,5	15 10373	15 10373

SILVER POLISHED



cm ↔	m ↻	m ↻
45	1,5 10120	15 10121
67,5	1,5 11070	15 11069

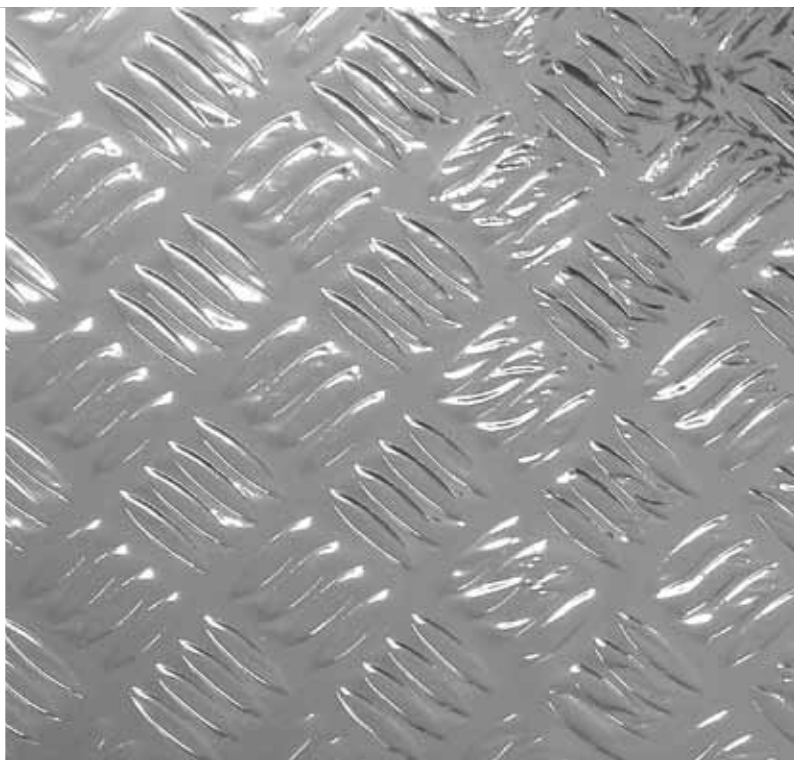
# METALLICS

SILVER EMBOSSED



cm ↔	m ↻	m ↻
45	1,5 10297	15 10296
67,5	1,5 10364	15 10365

SILVER RIFFLE



cm ↔	m ↻	m ↻
45	1,5 11950	5 11949
67,5	1,5 11952	5 11951

STAINLESS STEEL



cm ↔	m ↻	m ↻
45	1,5 11990	15 11989
67,5	1,5 12028	15 12027

STAINLESS NICKEL



cm ↔	m	m	m	m
45	1,5	11992	15	11991
67,5	1,5	12030	15	12029

STAINLESS COPPER



STAINLESS ALUMINIUM



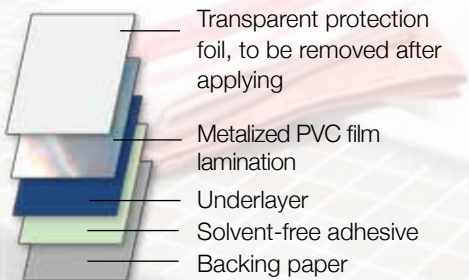
cm ↔	m	m	m	m
45	1,5	12586	15	12587
67,5	1,5	12588	15	12589

cm ↔	m	m	m	m
45	1,5	12751	15	12752

## HIGH END MIRROR FOIL



## CONSTRUCTION



Transparent protection foil, to be removed after applying

Metalized PVC film lamination

Underlayer

Solvent-free adhesive

Backing paper

## CHARACTERISTICS

- Mirror on a roll
- Brilliant optic
- Expands your room
- Easy to clean
- Easy to use

MIRROR



SPECIAL SELF ADHESIVE FOILS

HIGH END MIRROR FOIL

cm ↔	m ↗	m ↘
<b>45</b>	1,5 11954	5 11953
<b>67,5</b>	1,5 11956	5 11955
<b>90</b>	1,5 11994	5 11993

# CHALKBOARD



## CONSTRUCTION



PVC-Foil with special emboss for chalk

Solvent-free adhesive

Backing paper

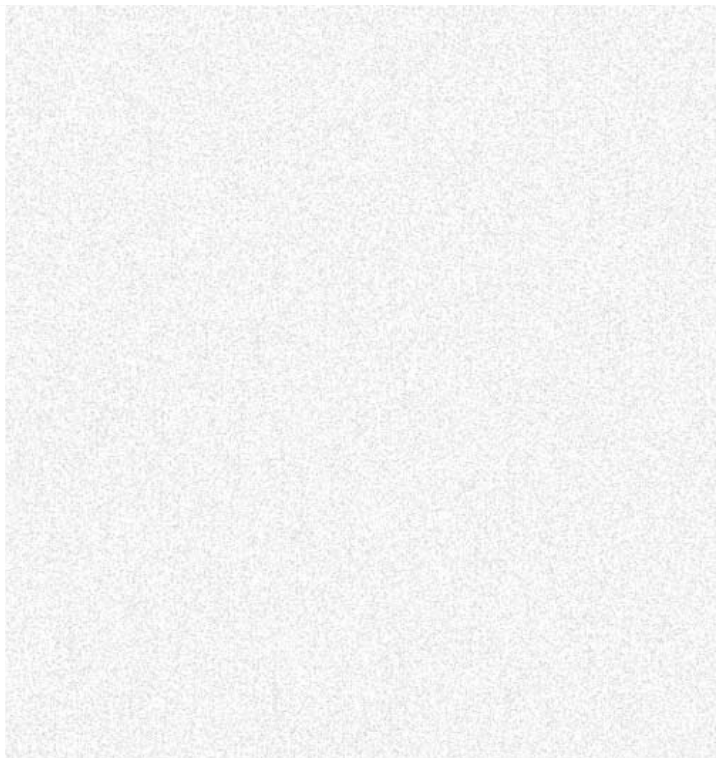
## CHARACTERISTICS

- Saves space through its multipurpose use (doors / cupboard)
- Wipeable with dry and damp cloth
- Easy to use

CHALKBOARD GREEN



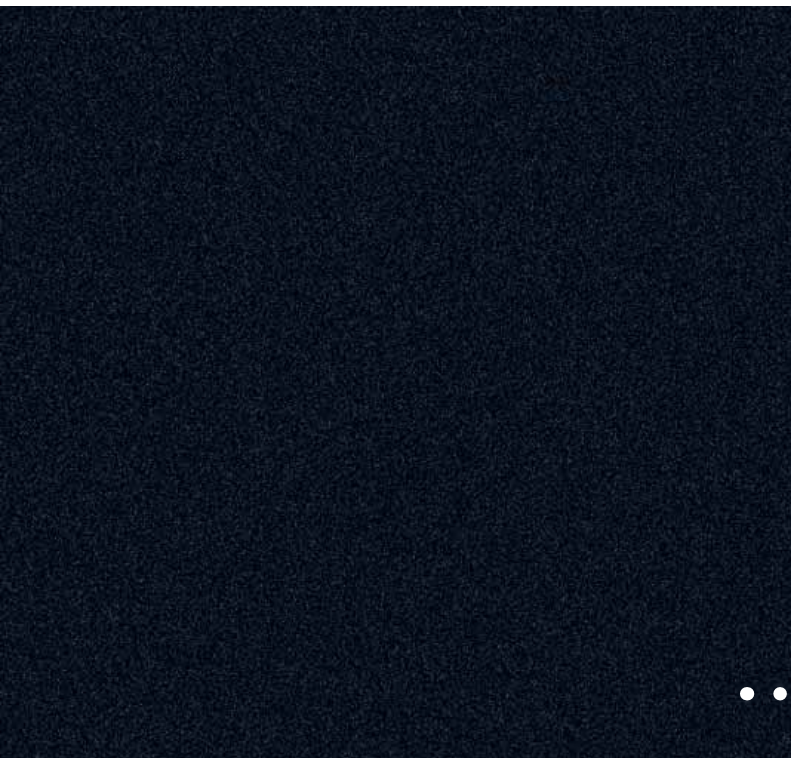
CHALKBOARD WHITE



cm ↔	m	m
45	1,5 11430	15 11429
67,5	1,5 11432	15 11431

cm ↔	m	m
45	1,5 12753	15 12754

CHALKBOARD BLACK



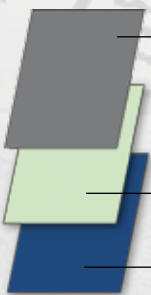
cm ↔	m	m
45	1,5 10008	15 10009
67,5	1,5 11396	15 11395



## WHITEBOARD



## CONSTRUCTION



PVC-Foil with top coat  
for whiteboard markers

Solvent-free adhesive

Backing paper

## CHARACTERISTICS

- Clipboardcover
- Wipeable many times
- Easy to use and clean

WHITEBOARD



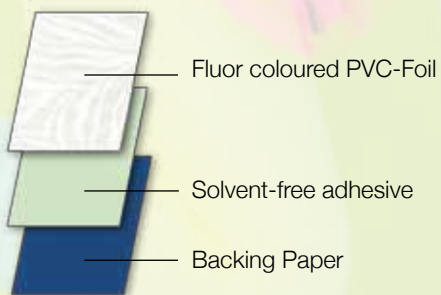
SPECIAL SELF ADHESIVE FOLLS

WHITEBOARD

cm ↔	m ↗	
45	1,5	11946
67,5	1,5	11947
90	2	11948



## CONSTRUCTION

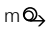


## CHARACTERISTICS

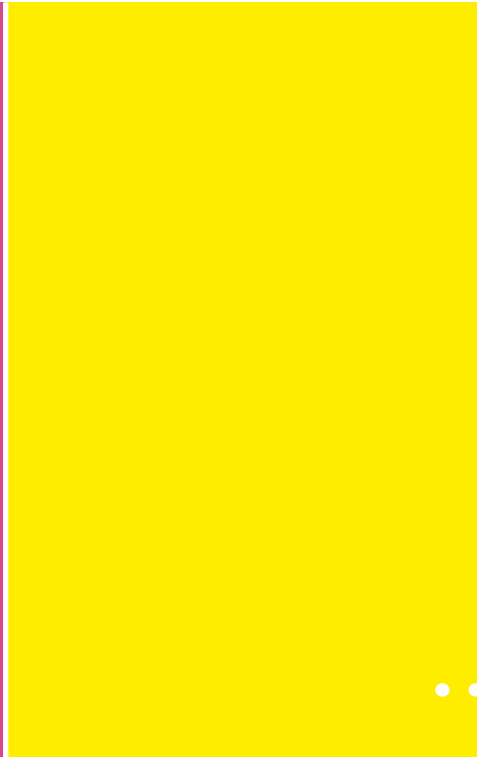
- Self adhesive
- Lightfast
- Easy to clean
- Easy to use

FLUOR PINK



cm ↔ m  m   
 45 1,5 10206 15 10207

FLUOR YELLOW

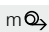
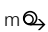


cm ↔ m  m   
 45 1,5 11440 15 11439



FLUOR ORANGE

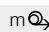
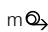


cm ↔ m  m   
 45 1,5 11450 15 11449



FLUOR GREEN

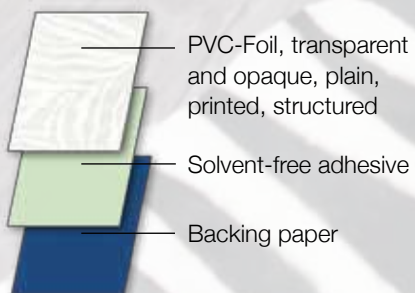


cm ↔ m  m   
 45 1,5 11460 15 11459

## SKINS



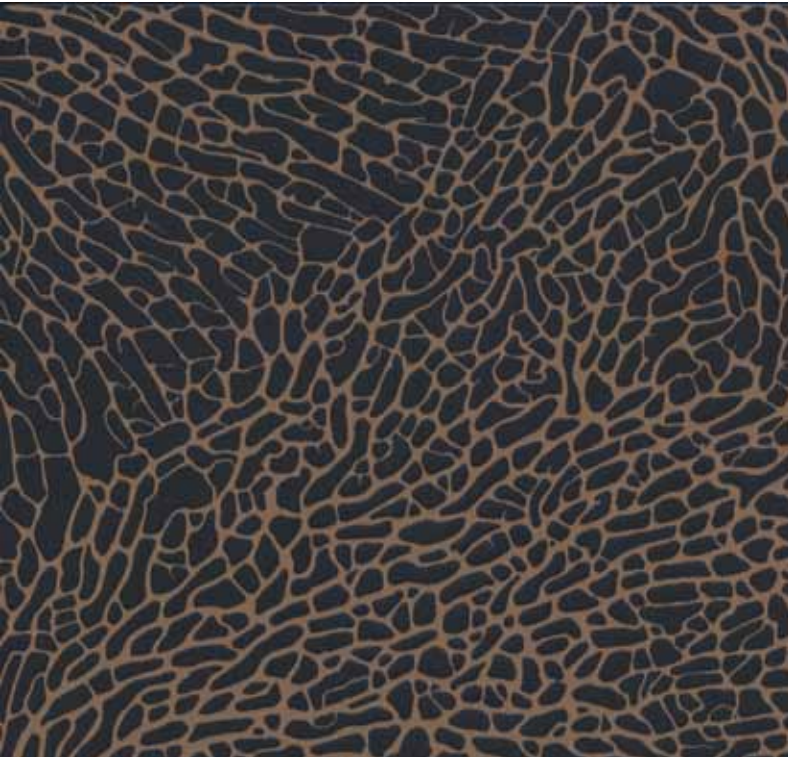
## CONSTRUCTION



## CHARACTERISTICS

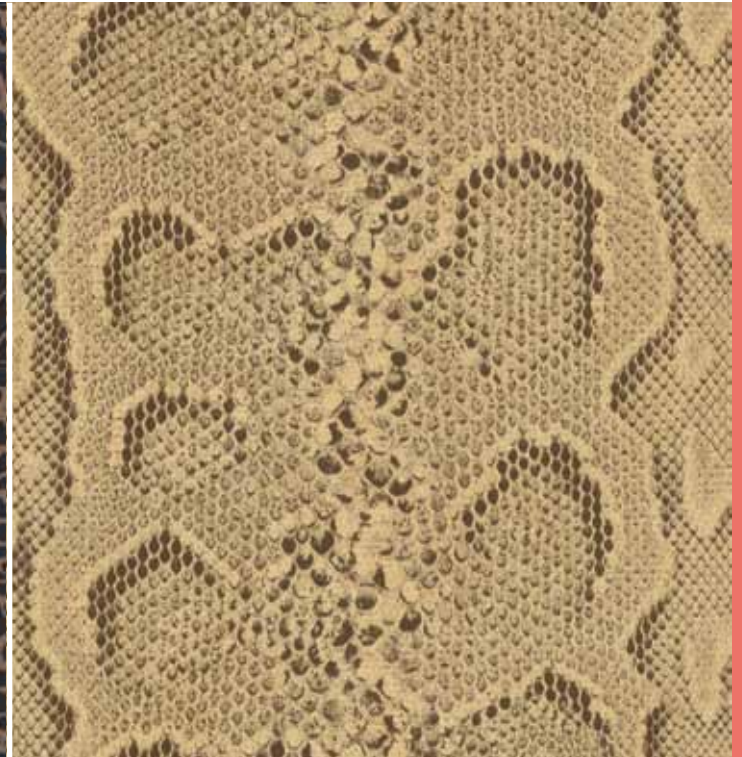
- Emboss effect
- Multipurpose usage
- Lightfast
- Easy to clean
- Easy to use

ARIEL BROWN



cm ↔	m	m
45	2 12627	15 12628

SNAKE



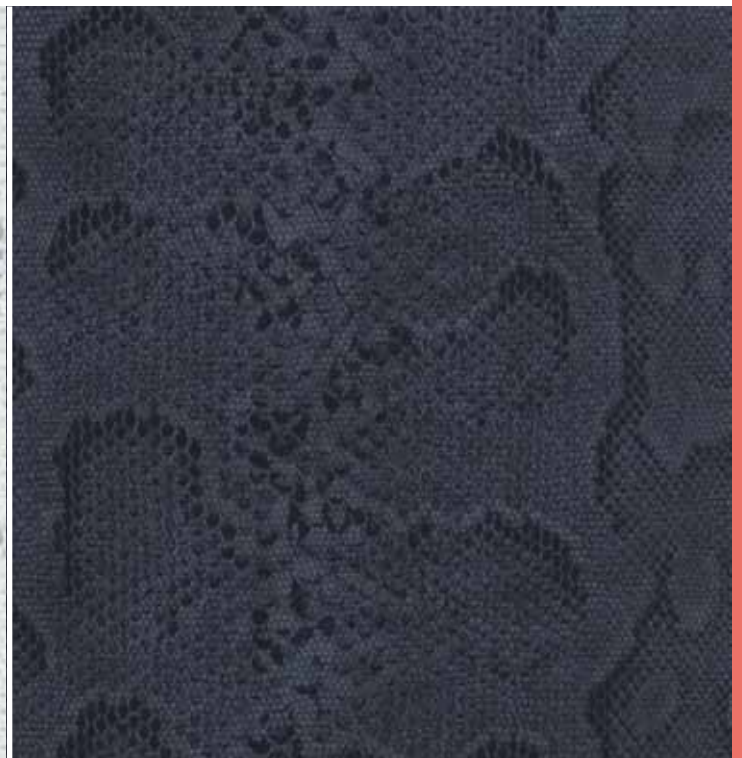
cm ↔	m	m
45	2 12086	15 12087

SNAKE WHITE



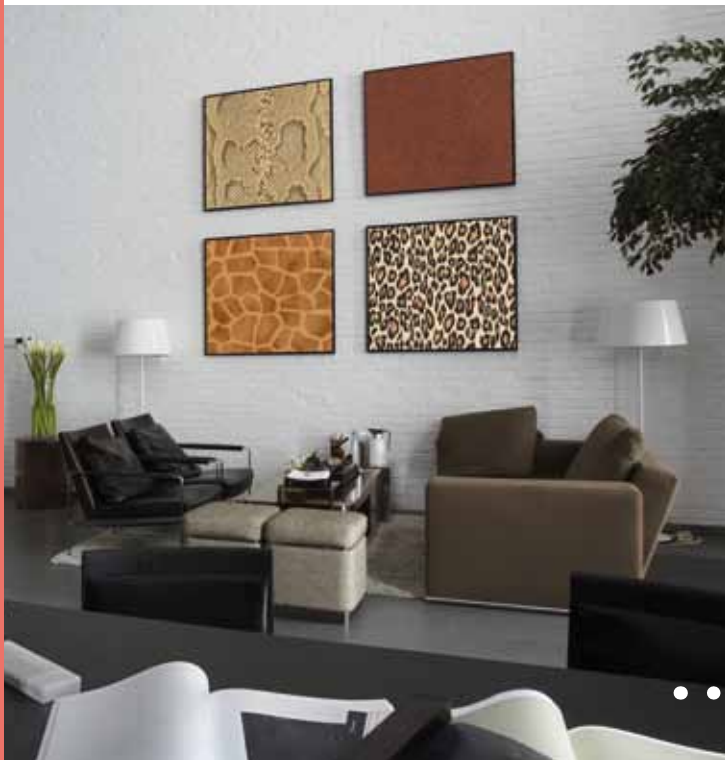
cm ↔	m	m
45	2 12615	15 12616

SNAKE BLACK



cm ↔	m	m
45	2 12617	15 12618

# SKINS



LEATHER



cm ↔	m ↗	m ↘
45	2 12625	15 12626

LEATHER FINE



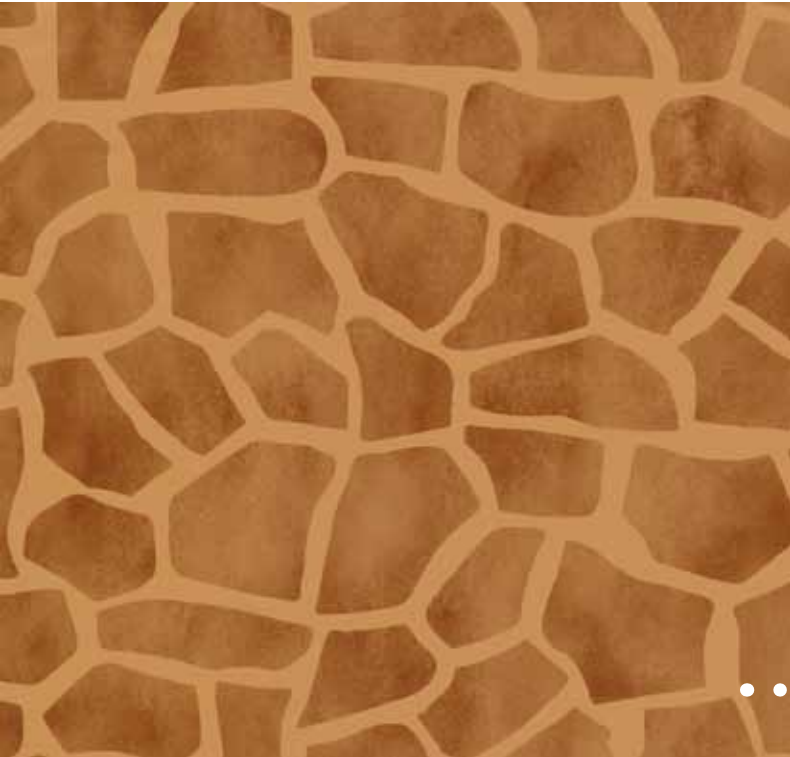
LEOPARD GREY



cm ↔	m ↗	m ↘
45	2 11530	15 11529
67,5		15 11531
90		15 11533

cm ↔	m ↗	m ↘
45	2 13537	15 13538

GIRAFFE



cm ↔	m	m
45	2 12623	15 12624

LEOPARD



LEOPARD PINK



cm ↔	m	m
45	2 12134	15 12135

cm ↔	m	m
45	2 12635	15 12636





ZEBRA



ZEBRA WHITE



cm ↔	m	m
45	2 10132	15 10133
67,5		15 11029
90		15 11031

cm ↔	m	m
45	2 12621	15 12622

ZEBRA GREY



ZEBRA PINK



cm ↔	m	m
45	2 12619	15 12620

cm ↔	m	m
45	2 12633	15 12634



**CONSTRUCTION**



PVC-Foil, transparent and opaque, plain, printed

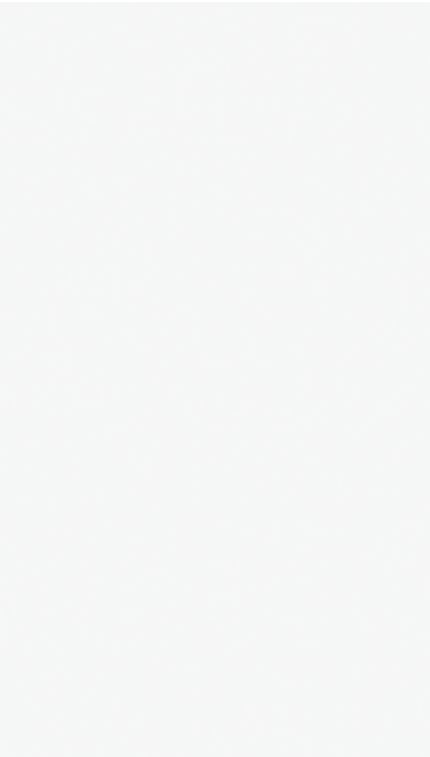
Solvent-free adhesive

Backing paper

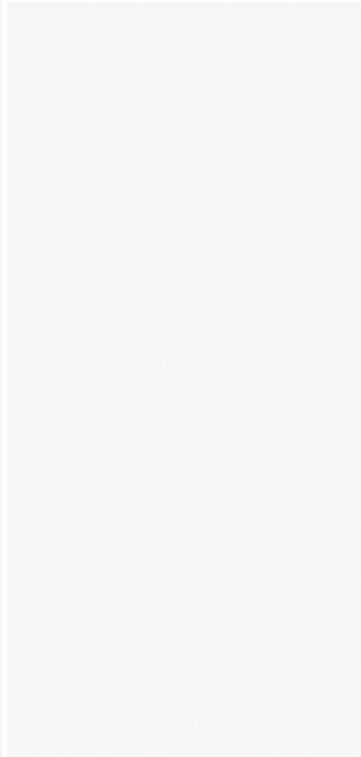
**CHARACTERISTICS**

- Decorative
- Multipurpose usage
- Lightfast
- Easy to clean
- Easy to use

WHITE



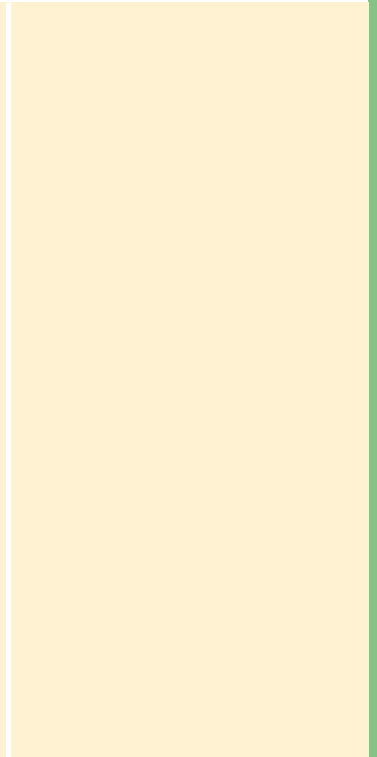
WHITE MAT



OFF WHITE



OFF WHITE MAT



cm ↔	m ↗	m ↘
<b>45</b>	2	10030
<b>67,5</b>	2	11388
<b>90</b>	2	11390

cm ↔	m ↗	m ↘
<b>45</b>	2	10048
<b>67,5</b>	2	11316
<b>90</b>	2	11318

cm ↔	m ↗	m ↘
<b>45</b>	2	13434
		15 13433

cm ↔	m ↗	m ↘
<b>45</b>	2	13435
<b>67,5</b>		15 13437
<b>90</b>		15 13438

BEIGE



BEIGE MAT



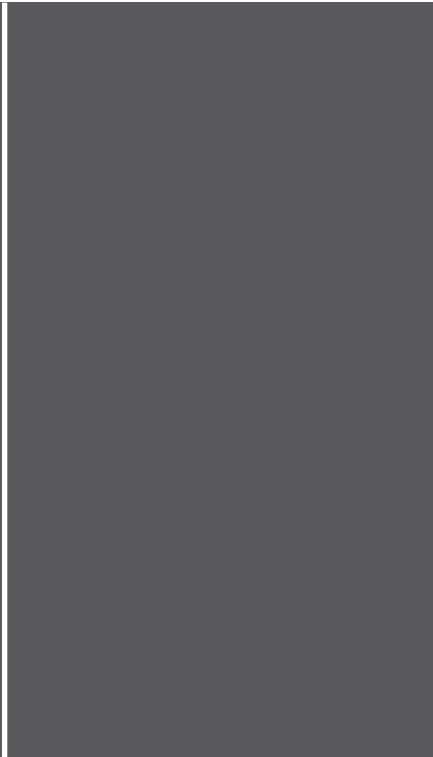
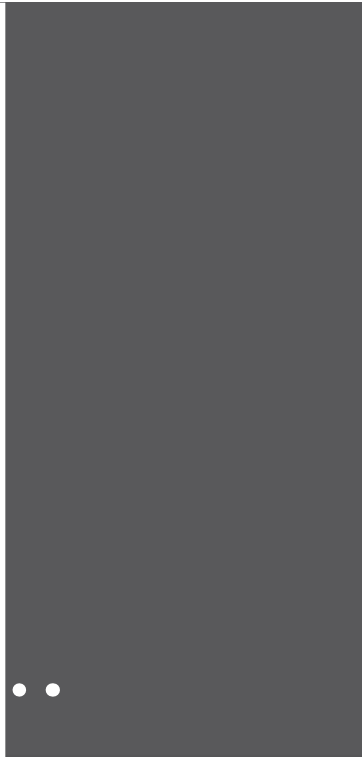
cm ↔	m ↗	m ↘
<b>45</b>	2	10042
<b>67,5</b>		15 10043
		15 11339

cm ↔	m ↗	m ↘
<b>45</b>	2	12690
		15 12691



GRAPHITE GREY

GRAPHITE GREY MAT



cm ↔	m	m
45	2	12694
		15 12695

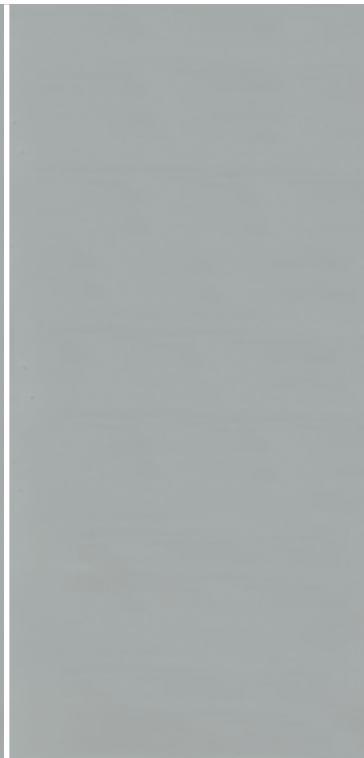
cm ↔	m	m
45	2	12692
		15 12693

SILVER GREY

SILVER GREY MAT

BLACK

BLACK MAT



cm ↔	m	m
45	2	13491
		15 13492

cm ↔	m	m
45	2	13443
		15 13444

cm ↔	m	m
45	2	10044
67,5	2	11332
90	2	11334
		15 10045
		15 11331
		15 11333

cm ↔	m	m
45	2	10056
67,5	2	11284
90		
		15 10057
		15 11283
		15 11285

BABY BLUE



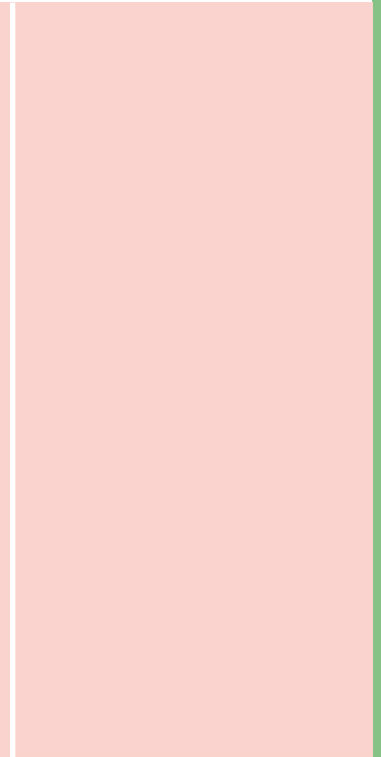
BABY BLUE MAT



BABY PINK



BABY PINK MAT



cm ↔ m m   
45 2 13481 15 13482

cm ↔ m m   
45 2 13379 15 13380

cm ↔ m m   
45 2 13483 15 13484

cm ↔ m m   
45 2 13381 15 13382

TAUPE



TAUPE MAT



cm ↔ m m   
45 2 12916 15 12917

cm ↔ m m   
45 2 12914 15 12915

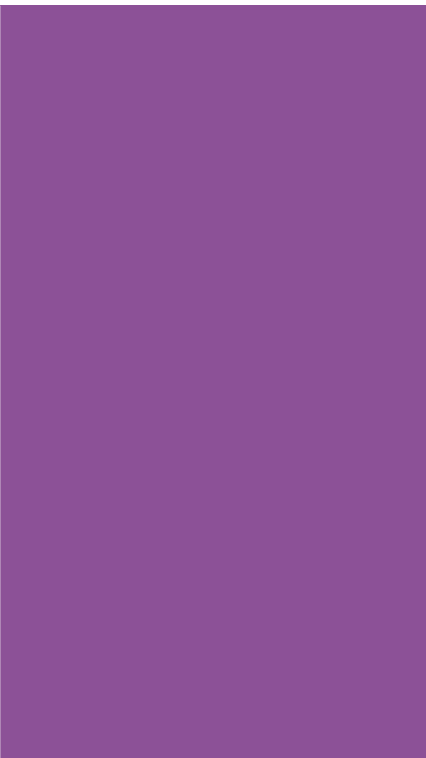
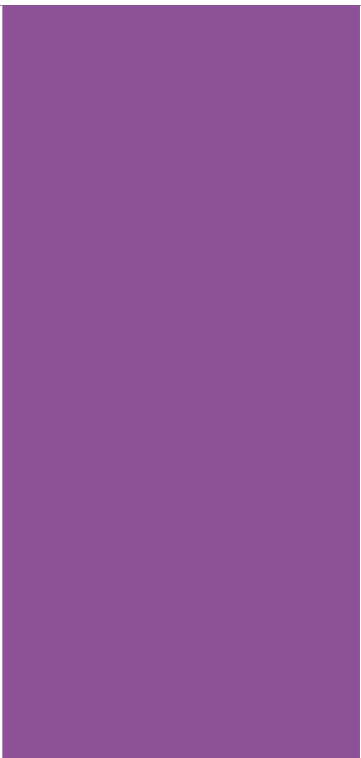
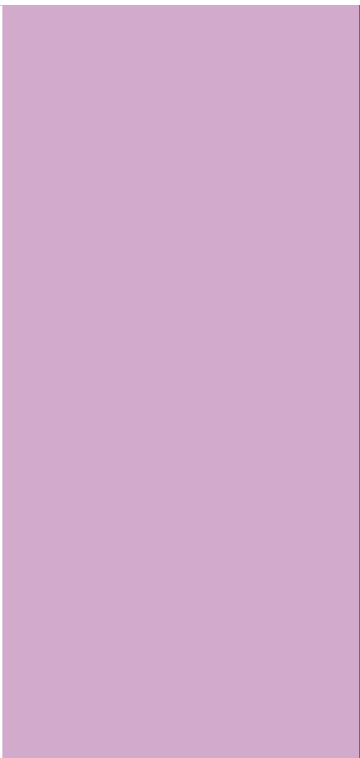
UNI

VIOLET

VIOLET MAT

PURPLE

PURPLE MAT



cm ↔ m m   
45 2 13487 15 13488

cm ↔ m m   
45 2 13377 15 13378

cm ↔ m m   
45 2 13489 15 13490

cm ↔ m m   
45 2 13375 15 13376

PINK

PINK MAT

CHERRY PINK

CHERRY PINK MAT



cm ↔ m m   
45 2 12920 15 12921

cm ↔ m m   
45 2 12918 15 12919

cm ↔ m m   
45 2 13485 15 13486

cm ↔ m m   
45 2 13373 15 13374

OCEAN BLUE



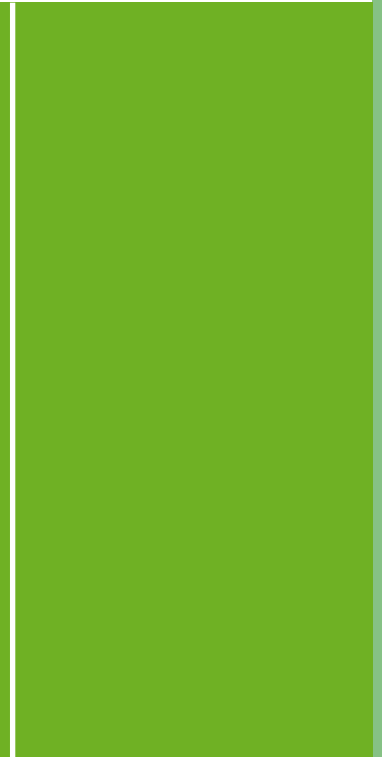
OCEAN BLUE MAT



LEMON GREEN



LEMON GREEN MAT



cm ↔	m ↗		m ↘	
45	2	13585	15	13586
67,5	2	13587	15	13588
90	2	13589	15	13590

cm ↔	m ↗		m ↘	
45	2	13591	15	13592
67,5	2	13593	15	13594
90	2	13595	15	13596

cm ↔	m ↗		m ↘	
45	2	13493	15	13494

cm ↔	m ↗		m ↘	
45	2	13367	15	13368

LIME



LIME MAT



cm ↔	m ↗		m ↘	
45	2	12698	15	12699

cm ↔	m ↗		m ↘	
45	2	12696	15	12697



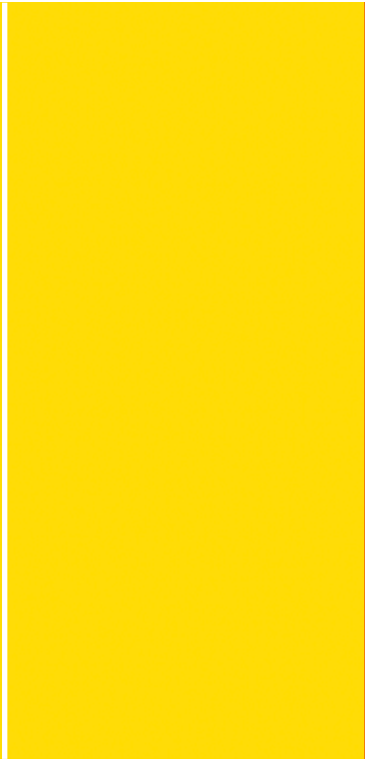
UNI

YELLOW

YELLOW MAT

ORANGE

ORANGE MAT



cm ↔	m ↗		m ↘	
45	2	10032	15	10033
67,5	2	11380	15	11379

cm ↔	m ↗		m ↘	
45	2	12686	15	12687

cm ↔	m ↗		m ↘	
45	2	10034	15	10035
67,5	2	11372	15	11371

cm ↔	m ↗		m ↘	
45	2	12688	15	12689

RED

RED MAT

VERMILION RED

VERMILION RED MAT



cm ↔	m ↗		m ↘	
45	2	10036	15	10037
67,5	2	11364	15	11363

cm ↔	m ↗		m ↘	
45	2	12266	15	12267
67,5	2	12268	15	12269
90	2	12270	15	12271

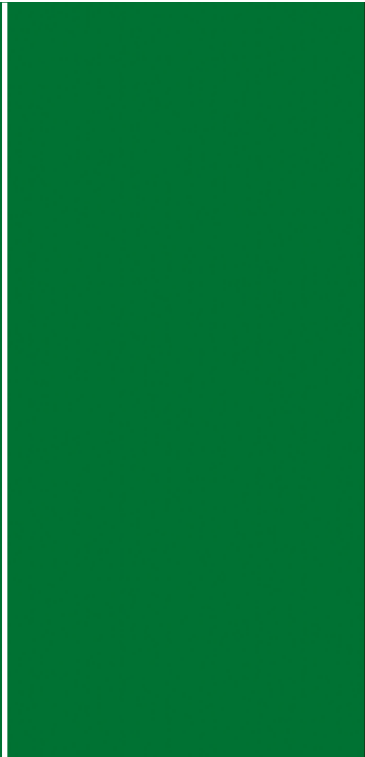
cm ↔	m ↗		m ↘	
45	2	13541	15	13542
67,5			15	13543

cm ↔	m ↗		m ↘	
45	2	10050	15	10051
67,5			15	11307

GREEN



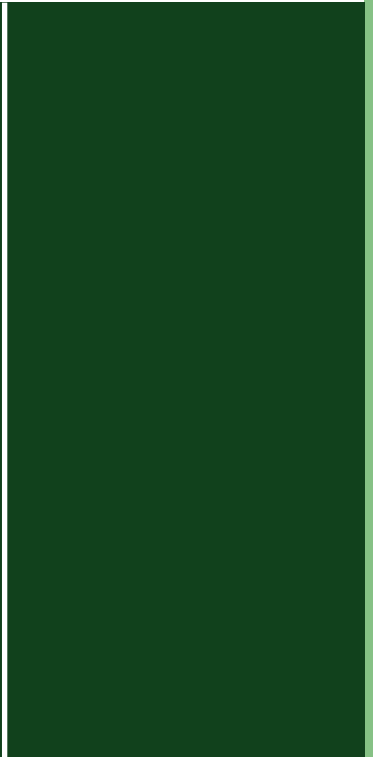
GREEN MAT



DARK GREEN



DARK GREEN MAT



cm ↔	m ↗		m ↘	
45	2	10040	15	10041
67,5	2	11348	15	11347

cm ↔	m ↗		m ↘	
45	2	10052	15	10053
67,5			15	11299

cm ↔	m ↗		m ↘	
45	2	13371	15	13372

cm ↔	m ↗		m ↘	
45	2	13369	15	13370

BLUE



BLUE MAT



SKY BLUE



SKY BLUE MAT



cm ↔	m ↗		m ↘	
45	2	10038	15	10039
67,5	2	11356	15	11355

cm ↔	m ↗		m ↘	
45	2	10054	15	10055
67,5			15	11291

cm ↔	m ↗		m ↘	
45	2	13495	15	13496

cm ↔	m ↗		m ↘	
45	2	13383	15	13384

## FALSE UNI



## CONSTRUCTION



PVC-Foil, transparent and opaque, plain, printed, with or without emboss

Solvent-free adhesive

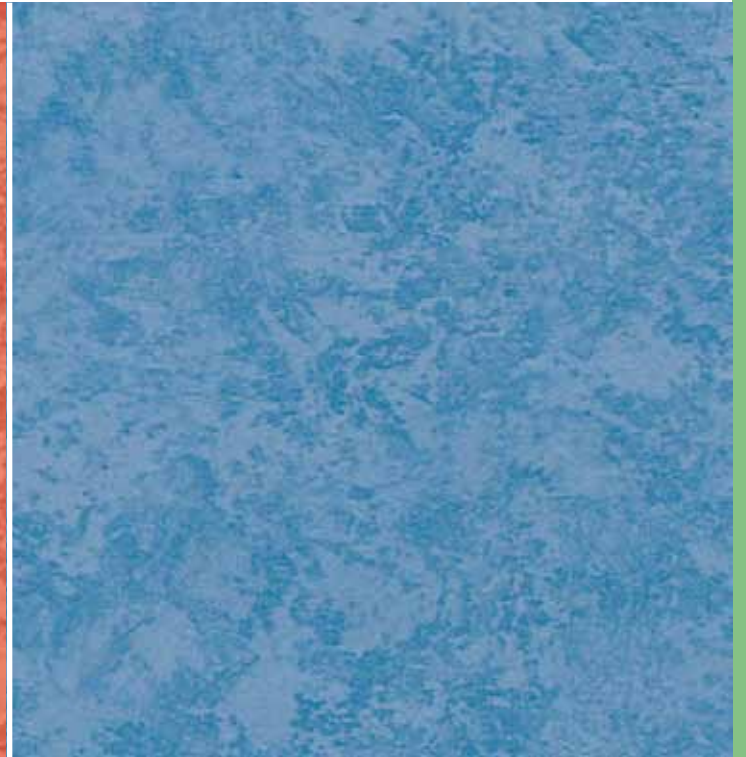
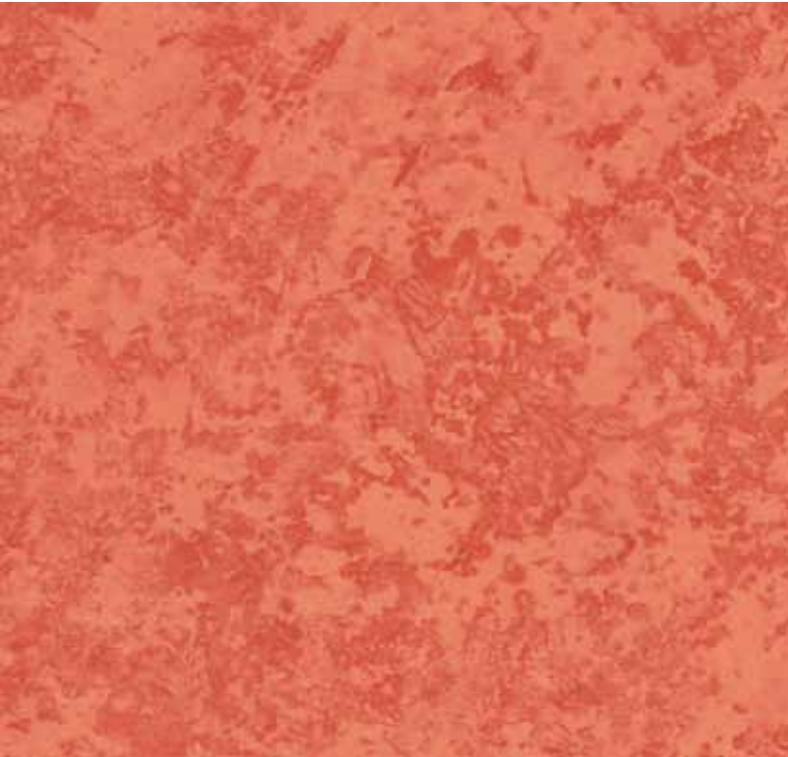
Backing paper

## CHARACTERISTICS

- Decorative
- Multipurpose usage
- Lightfast
- Easy to clean
- Easy to use

TERRACOTTA

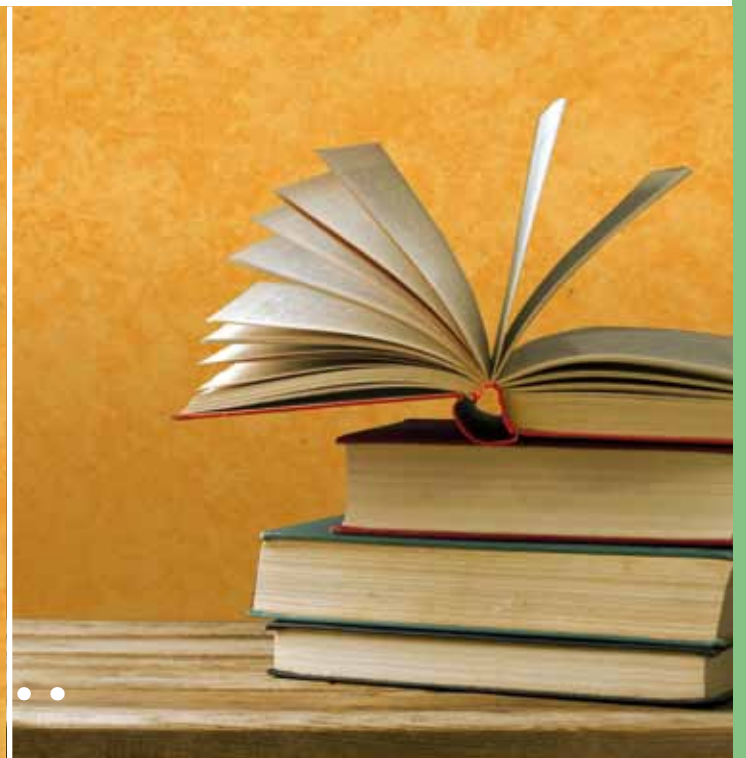
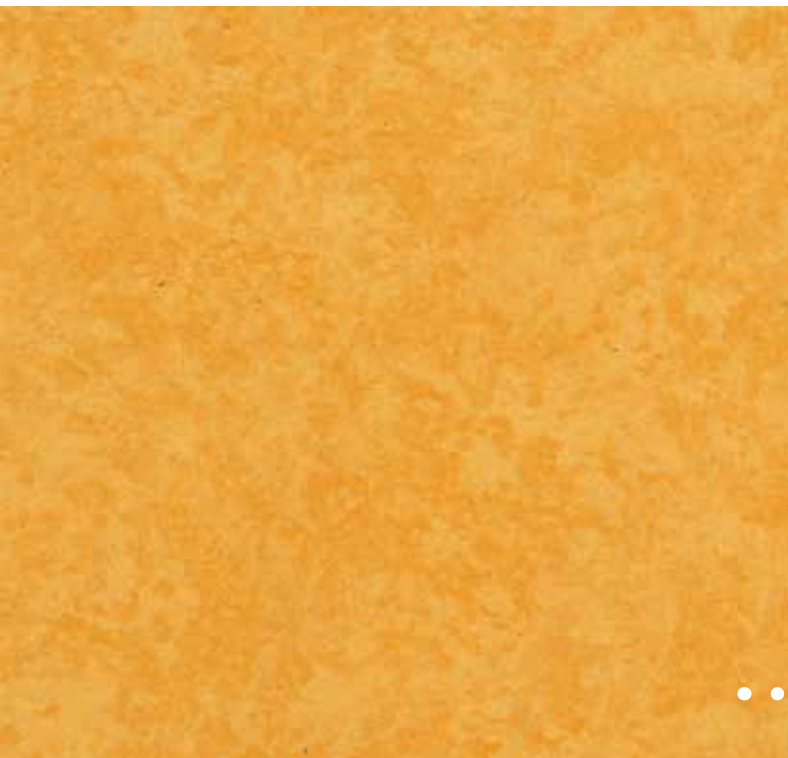
BLUE



cm ↔	m	m
45	2 10291	15 10290
67,5		15 10472
90		15 10474

cm ↔	m	m
45	2 10142	15 10143
67,5		15 10989
90		15 10991

YELLOW



cm ↔	m	m
45	2 10140	15 10141
67,5		15 10997
90		15 10999

FANTASY



CONSTRUCTION



PVC-Foil, transparent and opaque, plain, printed, with or without emboss

Solvent-free adhesive

Backing paper

CHARACTERISTICS

- Decorative
- Multipurpose usage
- Lightfast
- Easy to clean
- Easy to use

PATCHWORK



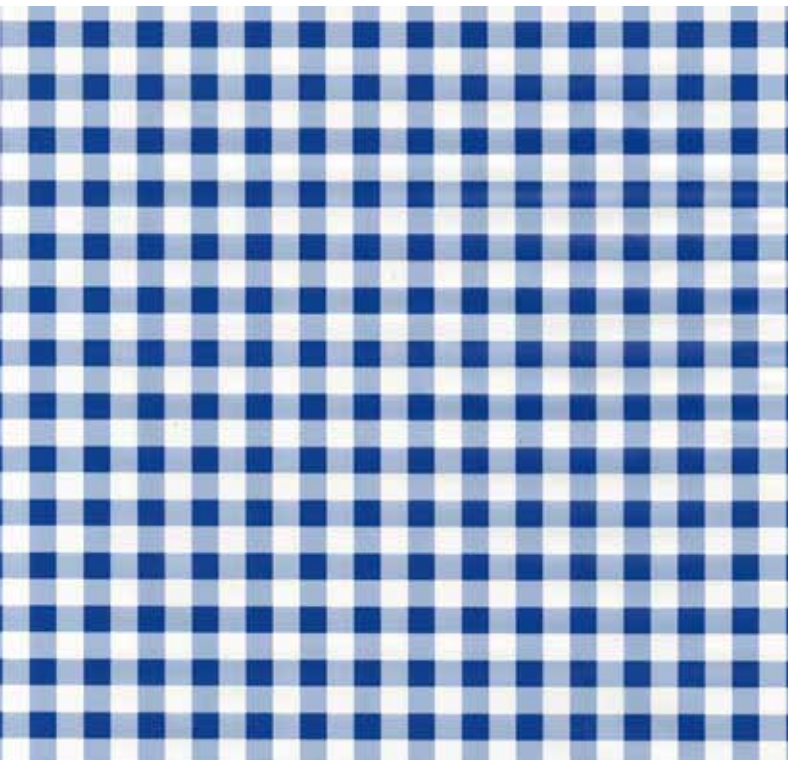
cm ↔	m	m	m	m
45	2	11984	15	11983
67,5	2	11986	15	11985
90	2	11988	15	11987

PATCHWORK RED/BLUE LIGHT



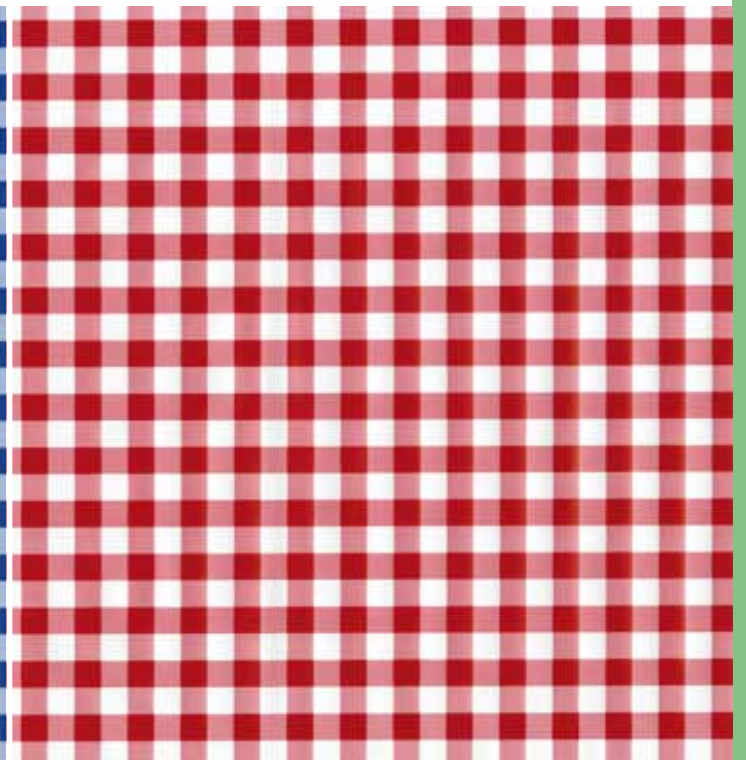
cm ↔	m	m	m	m
45	2	12645	15	12646

CHECK BLUE



cm ↔	m	m	m	m
45	2	12818	15	12819

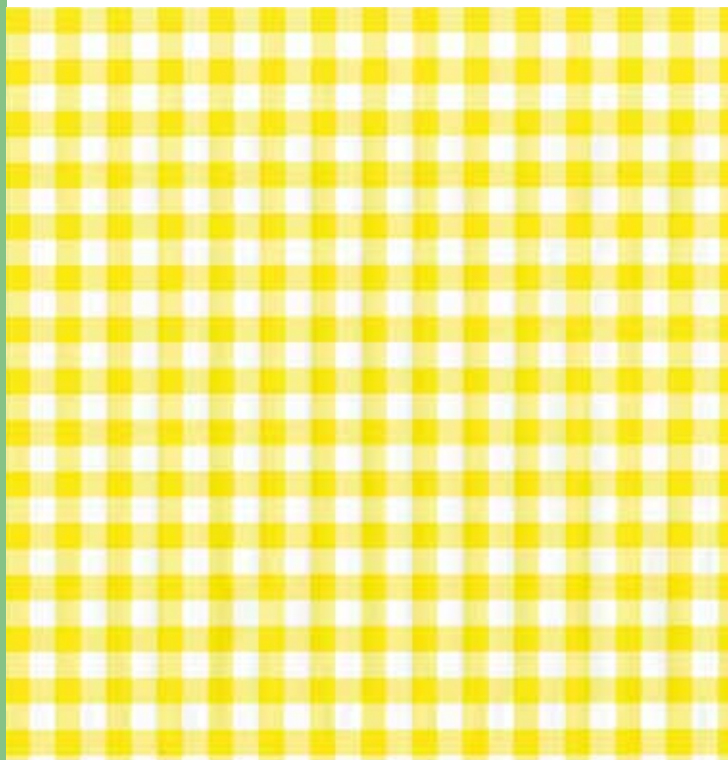
CHECK RED



cm ↔	m	m	m	m
45	2	12822	15	12823

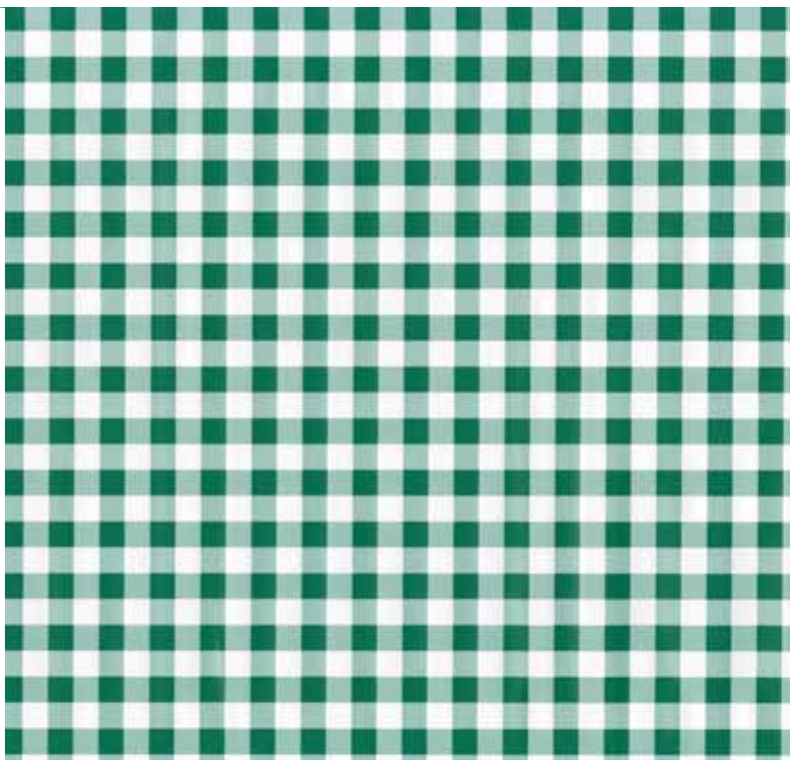
## FANTASY

CHECK YELLOW



cm	m	m
45	2 12820	15 12821

CHECK GREEN



cm	m	m
45	2 12824	15 12825

DOTS AQUA



cm	m	m
45	2 12704	15 12705



DOTS RED



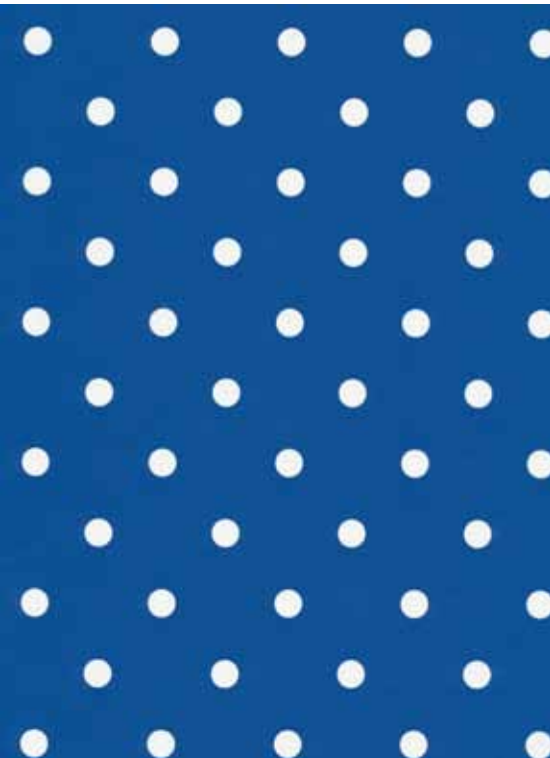
DOTS BLACK



cm ↔ m  $\frac{Q_2}{Q_1}$   
 45 2 12594 15 12595

cm ↔ m  $\frac{Q_2}{Q_1}$   
 45 2 12597 15 12598

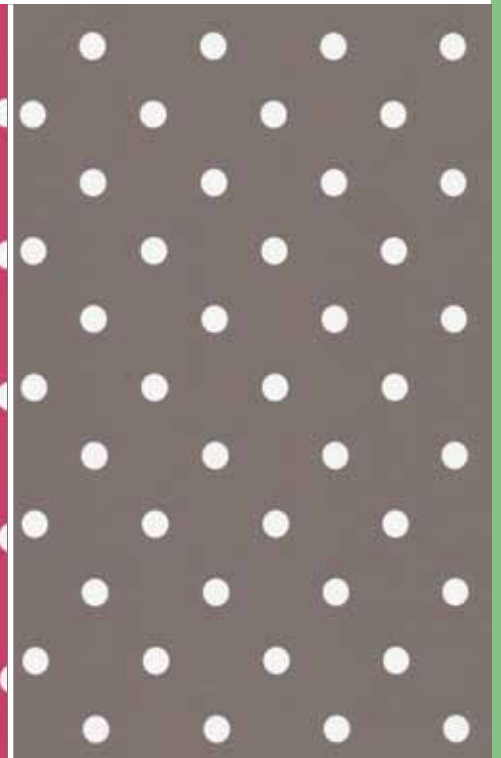
DOTS PURPLE BLUE



DOTS PINK



DOTS TAUPE



cm ↔ m  $\frac{Q_2}{Q_1}$   
 45 2 12702 15 12703

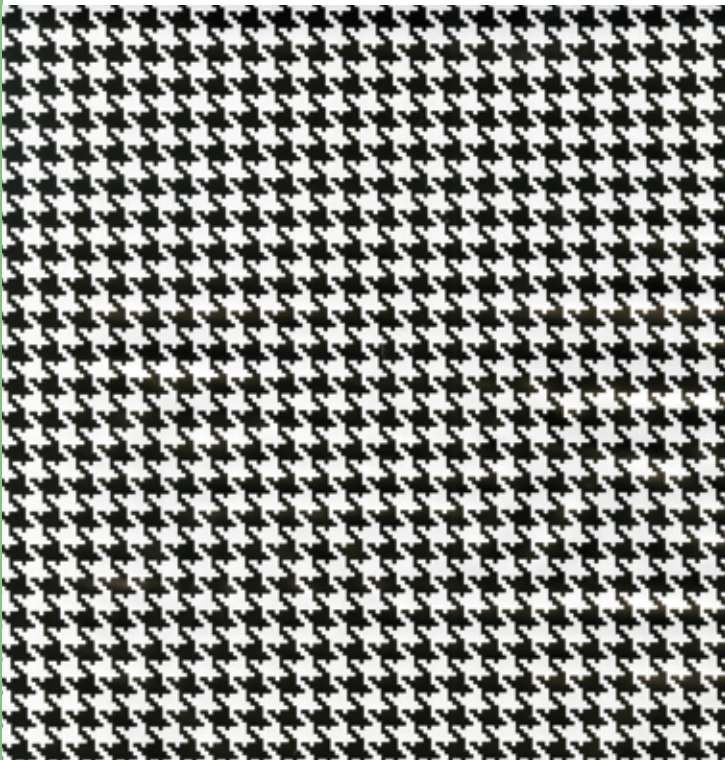
cm ↔ m  $\frac{Q_2}{Q_1}$   
 45 2 12700 15 12701

cm ↔ m  $\frac{Q_2}{Q_1}$   
 45 2 12706 15 12707



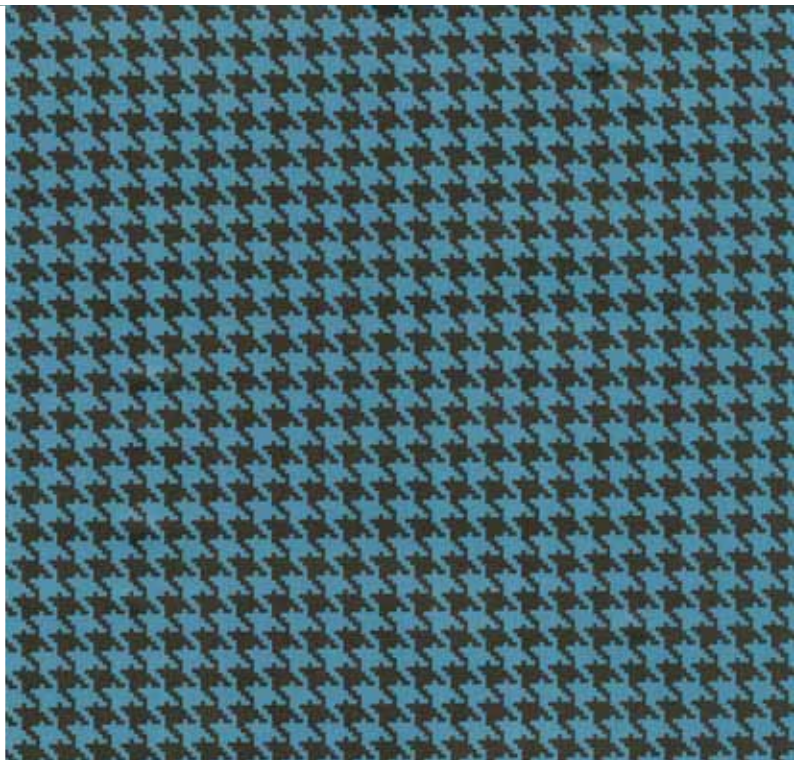
# FANTASY

PIED DE POULE



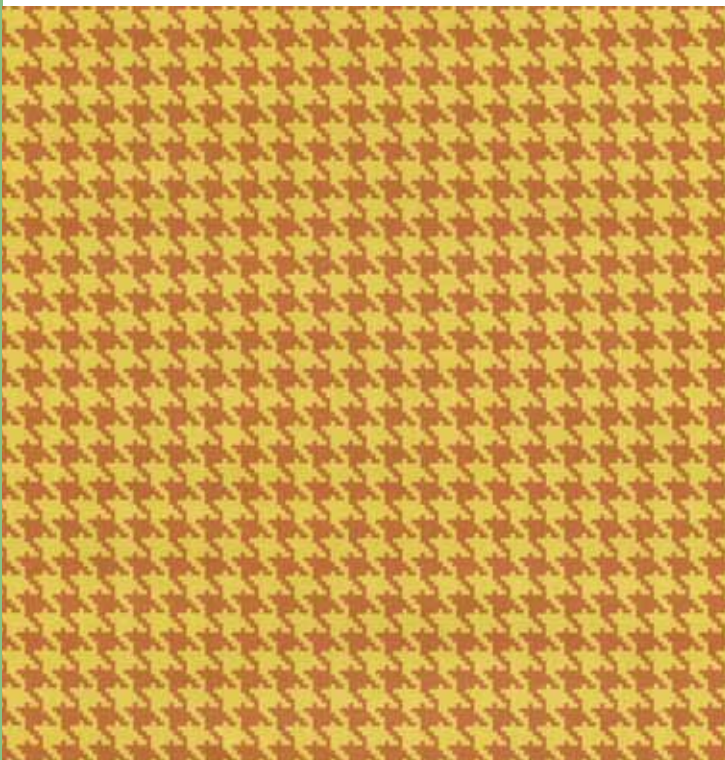
cm	m	m
45	2 12839	15 12840

PIED DE POULE AQUA



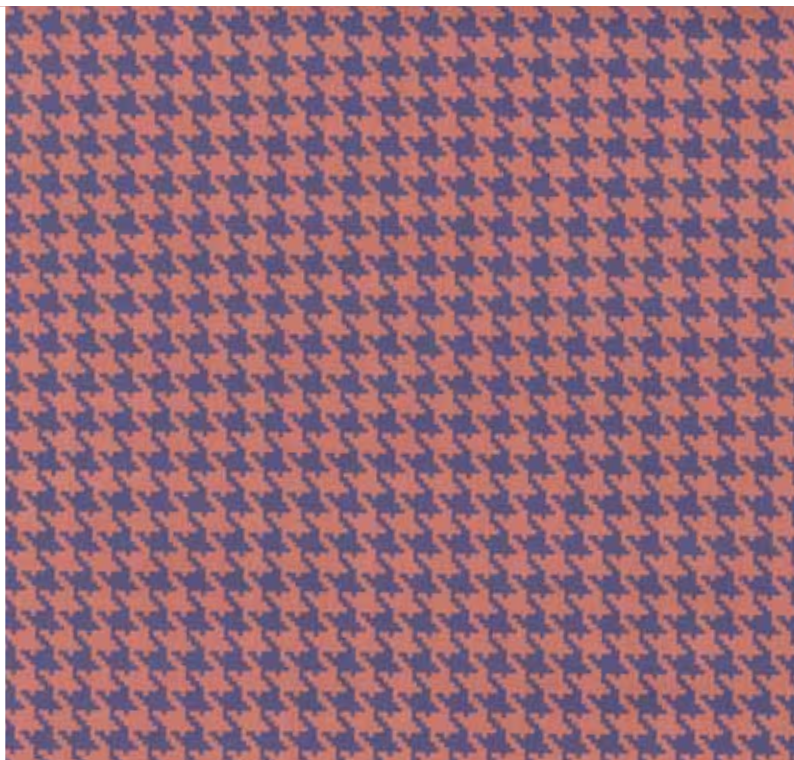
cm ↔	m	m
45	2 12841	15 12842

PIED DE POULE ORANGE



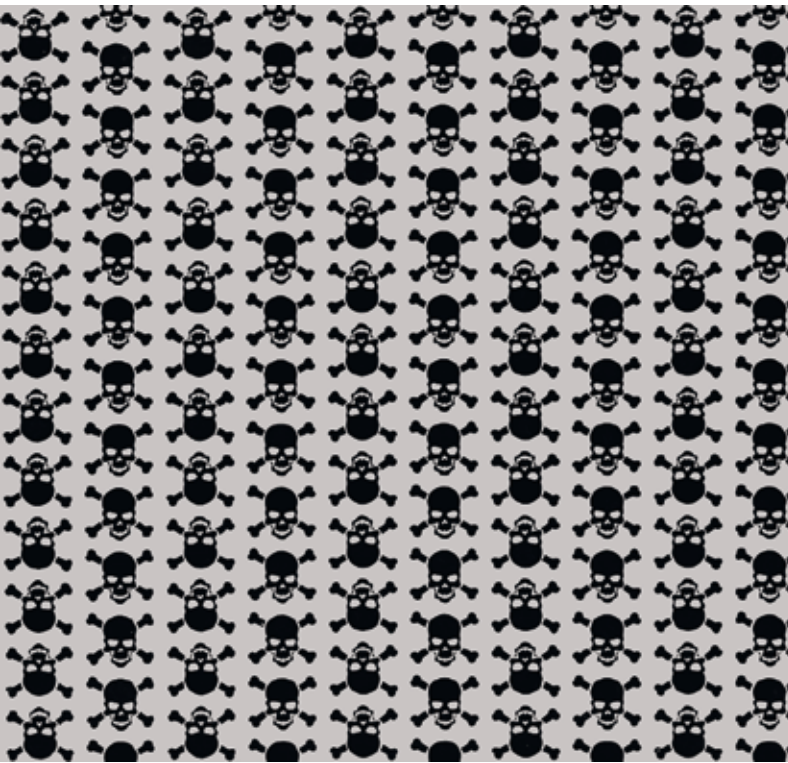
cm	m	m
45	2 12843	15 12844

PIED DE POULE PURPLE



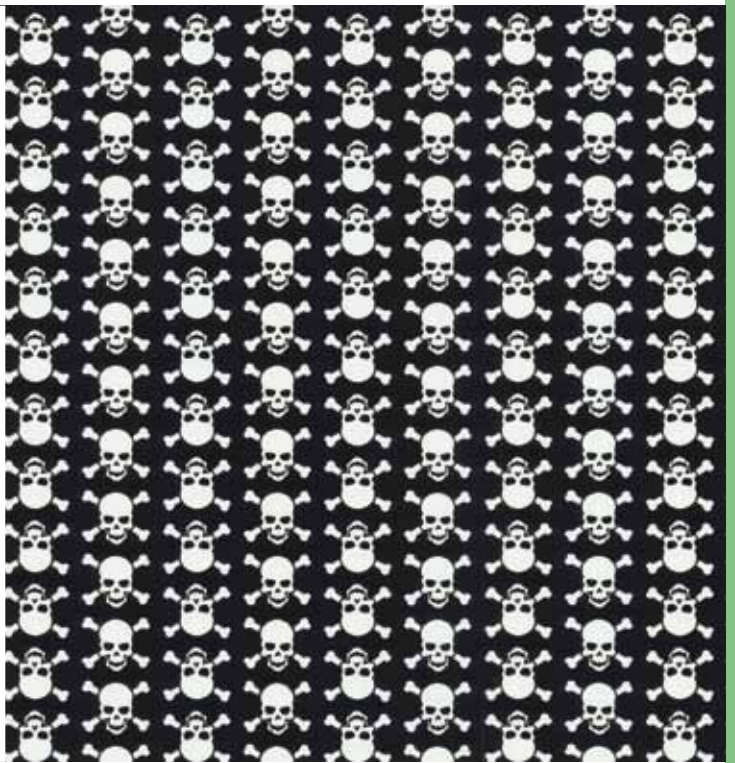
cm	m	m
45	2 12845	15 12846

SKULLS



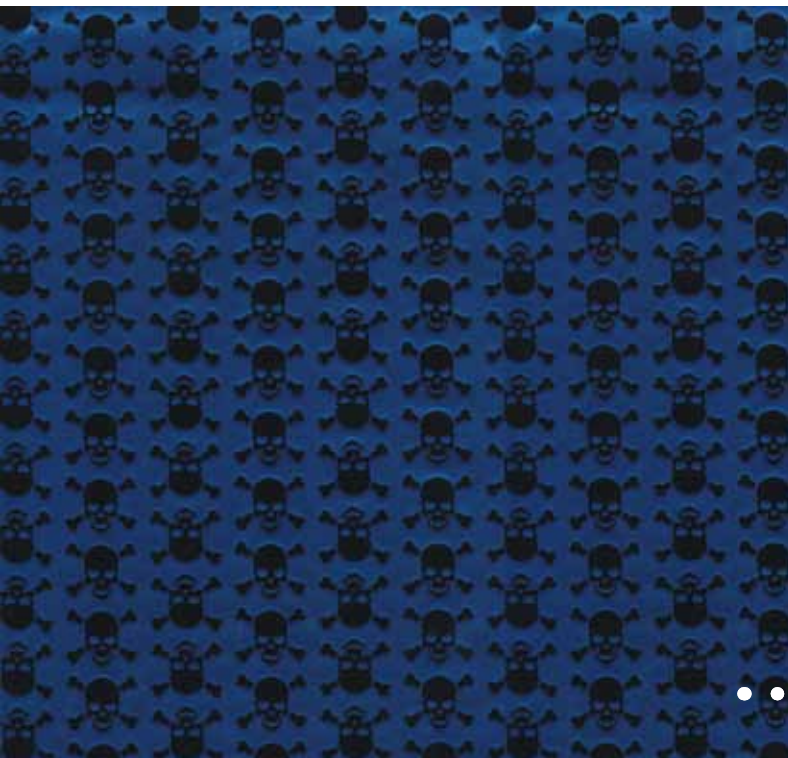
cm ↔	m	m
45	2 11935	15 11934
90		15 11938

SKULLS WHITE



cm ↔	m	m
45	2 12649	15 12650

SKULLS METALLIC BLUE



cm ↔	m	m
45	2 12651	15 12652



FANTASY

TEXTS



TEXTS YELLOW



cm ↔	m ↗	m ↘
45	2 11929	15 11928
67,5		15 11930
90		15 11932

cm ↔	m ↗	m ↘
45	2 12833	15 12834

TEXTS GREY BLUE



TEXTS RED PINK



cm ↔	m ↗	m ↘
45	2 12835	15 12836

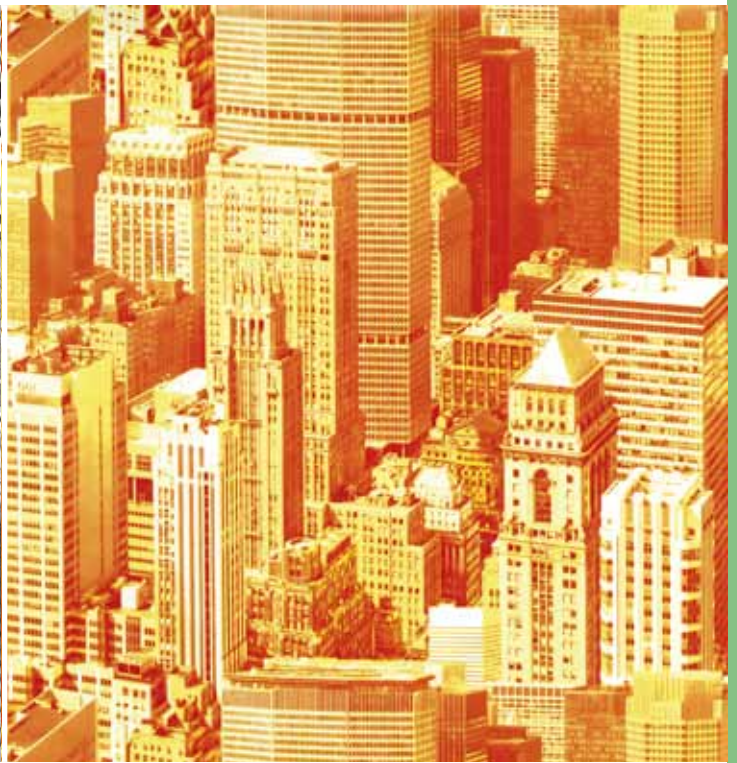
cm ↔	m ↗	m ↘
45	2 12837	15 12838

URBAN SKY



cm ↔	m	m
45	2 11911	15 11910
67,5		15 11912
90		15 11914

URBAN SKY ORANGE



cm ↔	m	m
45	2 12865	15 12866

ALPHA



cm ↔	m	m
45	2 12875	15 12876

ALPHA BLACK



cm ↔	m	m
45	2 13409	15 13410

## FANTASY

BOOK STACK



cm ↔	m	m
45	2 11774	15 11773
67,5		15 11775

CITY TAXI



cm ↔	m	m
45	2 11917	15 11916
67,5		15 11918
90		15 11920

GALLERY



cm ↔	m	m
45	2 12908	15 12909

SCRAPBOOK



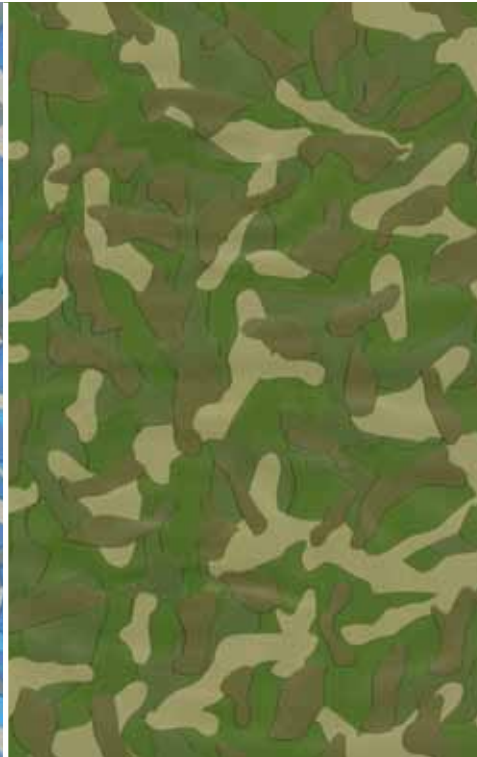
cm ↔	m	m
45	2 12910	15 12911

CAMOUFLAGE BLUE



cm ↔	m	m
45	2 12859	15 12860

CAMOUFLAGE GREEN



cm ↔	m	m
45	2 13539	15 13540

CAMOUFLAGE GREY



cm ↔	m	m
45	2 12861	15 12862

PARIS



cm ↔	m	m
45	2 12671	15 12672

JEANS



cm ↔	m	m
45	2 12676	15 12677

COMIC



cm ↔	m	m
45	2 11941	15 11940
67,5		15 11942
90	2 11945	15 11944

# FANTASY

COLOURED CIRCLES



cm ↔ m 2 12682 15 12683

SNOW-FLAKES



cm ↔ m 2 12674 15 12675

BUTTERFLIES



cm ↔ m 2 12684 15 12685

CUPS



cm ↔ m 2 12873 15 12874

APPLES & PEARS BLUE



cm ↔ m 45 2 12851 15 12852

APPLES & PEARS YELLOW



cm ↔ m 45 2 12853 15 12854

APPLES & PEARS GREEN



cm ↔ m 45 2 12849 15 12850

CANDY



cm ↔ m 45 2 12867 15 12868

BASKET WEAVE



cm ↔ m 45 2 12902 15 12903

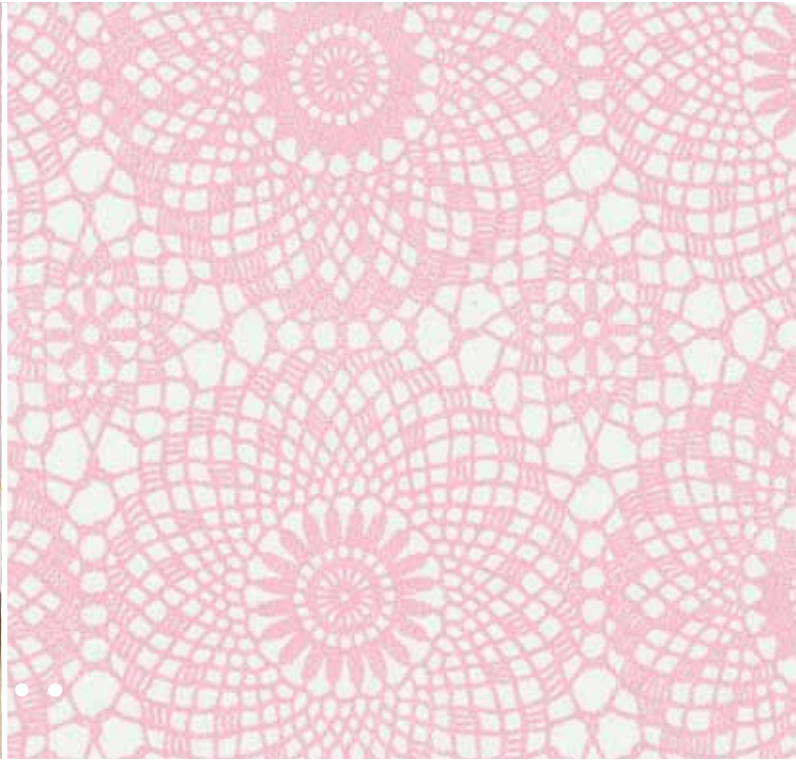




FANTASY



CONTOUR ROSE



cm ↔	m ↗	m ↘
45	2 12647	15 12648

HERITAGE BLACK WHITE



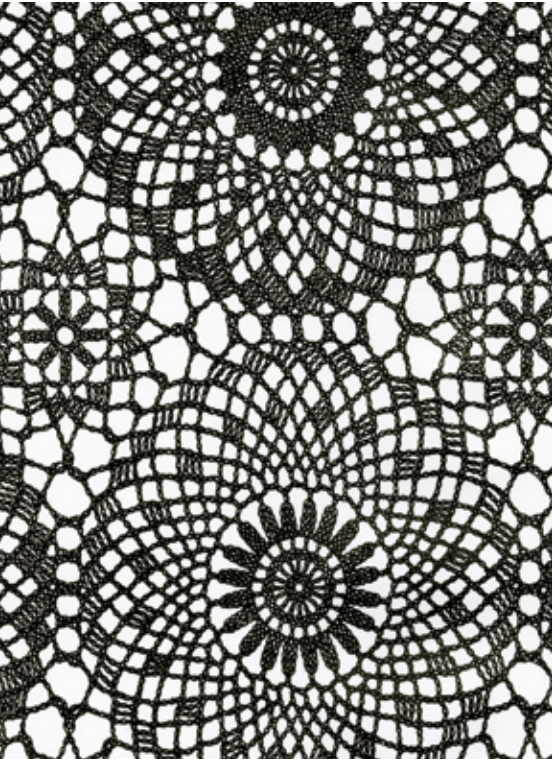
HERITAGE SILVER



cm ↔	m ↗	m ↘
45	2 10247	15 10246
67,5	15 10579	15 10579
90	2 10582	15 10581

cm ↔	m ↗	m ↘
45	2 10134	15 10135
67,5	15 11021	15 11021
90	2 11023	15 11023

CONTOUR BLACK



cm ↔	m	m
45	2 12869	15 12870

CLASSIC ORNAMENT BLACK



cm ↔	m	m
45	2 10108	15 10109
67,5		15 11115
90		15 11117

CLASSIC ORNAMENT BEIGE



cm ↔	m	m
45	2 10236	15 10235
67,5		15 10619
90		15 10621

ORIENTAL BLOSSOM



cm ↔	m	m
45	2 11764	15 11763
67,5		15 11765
90		15 11767

CIRRUS



cm ↔	m	m
45	2 11905	15 11904
67,5		15 11906
90		15 11908



# FANTASY



AIDA BLUE/GOLD



cm ↔	m ↗	m ↘
45	2 11893	15 11892
67,5		15 11894
90		15 11896

AIDA BLUE



BEARS



cm ↔	m ↗	m ↘
45	2 11899	15 11898
67,5		15 11900

cm ↔	m ↗	m ↘
45	2 11684	15 11683
67,5		15 11685
90		15 11687

FAIRY



cm ↔	m	m
45	2 11674	15 11673
67,5		15 11675
90		15 11677

HEARTS



cm ↔	m	m
45	2 11724	15 11723
67,5		15 11725

MICKEY Licensed by Disney®



cm ↔	m	m
45	2 12922	15 12923

AEROPLANE



cm ↔	m	m
45	2 11694	15 11693
67,5		15 11695
90		15 11697

WINNIE THE POOH Licensed by Disney®



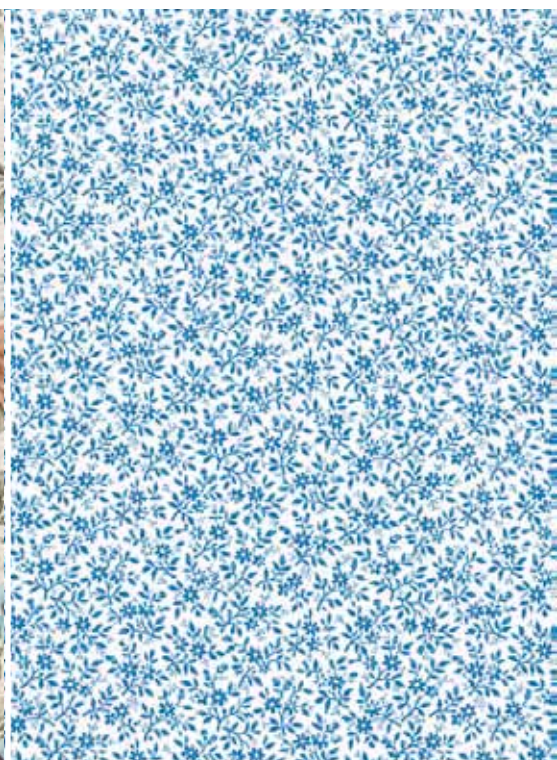
cm ↔	m	m
45	2 12712	15 12713



# FANTASY

ROMANTIC

LEAH



cm ↔	m	m	m
<b>45</b>	2	10224	15 10223
<b>67,5</b>			15 10667
<b>90</b>			15 10669

cm ↔	m	m	m
<b>45</b>	2	11490	15 11489

DECOR

CLAIRE



cm ↔	m	m	m
<b>45</b>	2	11664	15 11663
<b>67,5</b>			15 11665
<b>90</b>			15 11667

cm ↔	m	m	m
<b>45</b>	2	10238	15 10237
<b>67,5</b>			15 10611
<b>90</b>			15 10613

FLEUR



cm ↔	m	m
45	2 12871	15 12872

FLEUR GREY



cm ↔	m	m
45	2 12912	15 12913

FLEUR BEIGE



cm ↔	m	m
45	2 13421	15 13422

FLEUR BLACK



cm ↔	m	m
45	2 13423	15 13424

FLEUR WHITE



cm ↔	m	m
45	2 13425	15 13426

# FANTASY

STARS YELLOW

STARS PINK



cm ↔ m 2 13413 15 13414

cm ↔ m 2 13411 15 13412

STARS RED

STARS BLUE

STARS GREEN

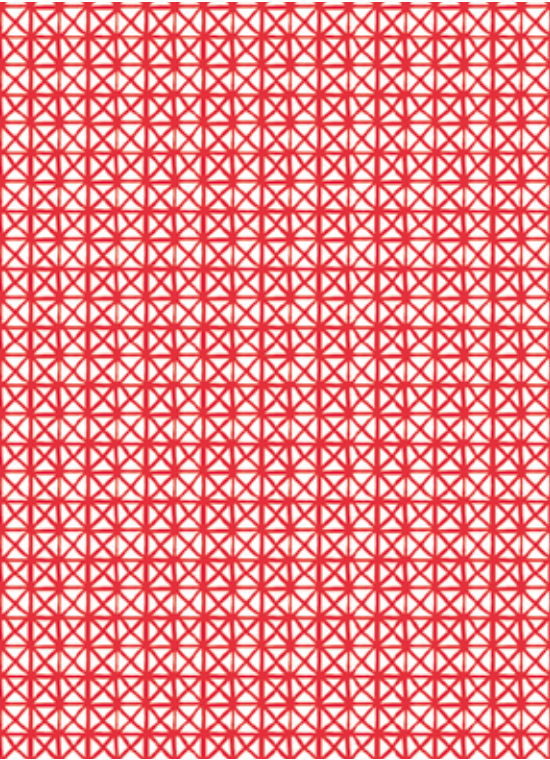


cm ↔ m 2 13415 15 13416

cm ↔ m 2 13417 15 13418

cm ↔ m 2 13419 15 13420

ANDY RED



cm ↔	m	m
45	2 13461	15 13462

ANDY BLUE



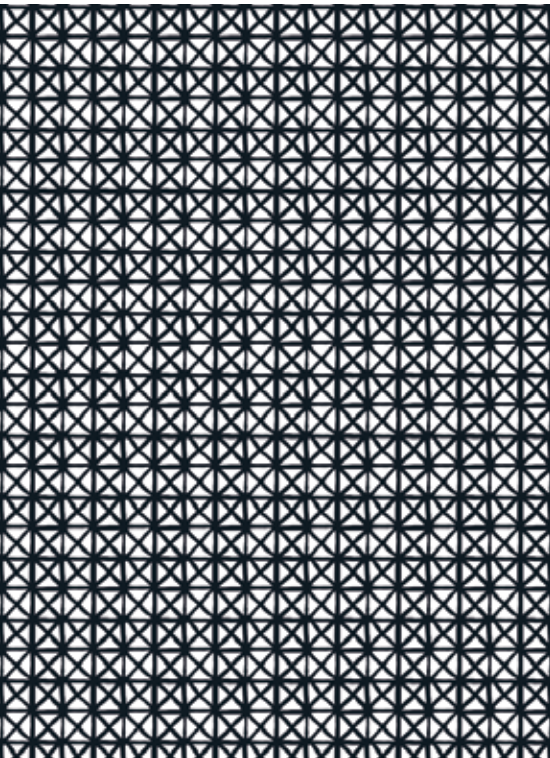
cm ↔	m	m
45	2 13457	15 13458

ANDY YELLOW



cm ↔	m	m
45	2 13463	15 13464

ANDY BLACK



cm ↔	m	m
45	2 13465	15 13466

ANDY PINK



cm ↔	m	m
45	2 13459	15 13460

JULIA



cm ↔	m	m
45	2 13499	15 13500

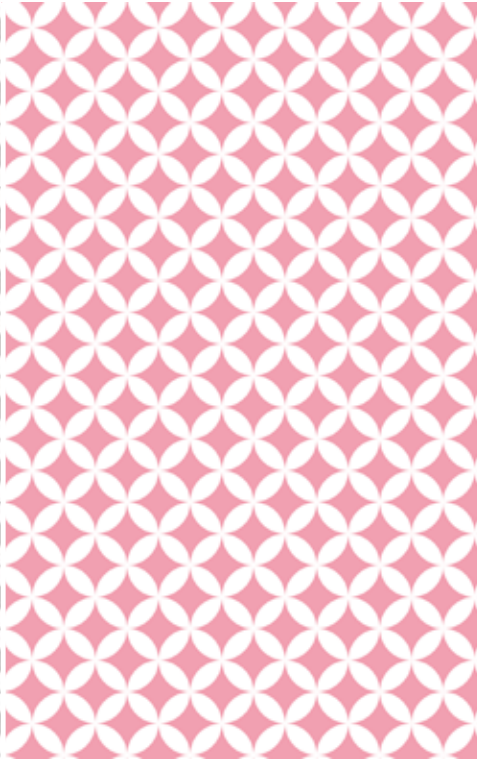


# FANTASY

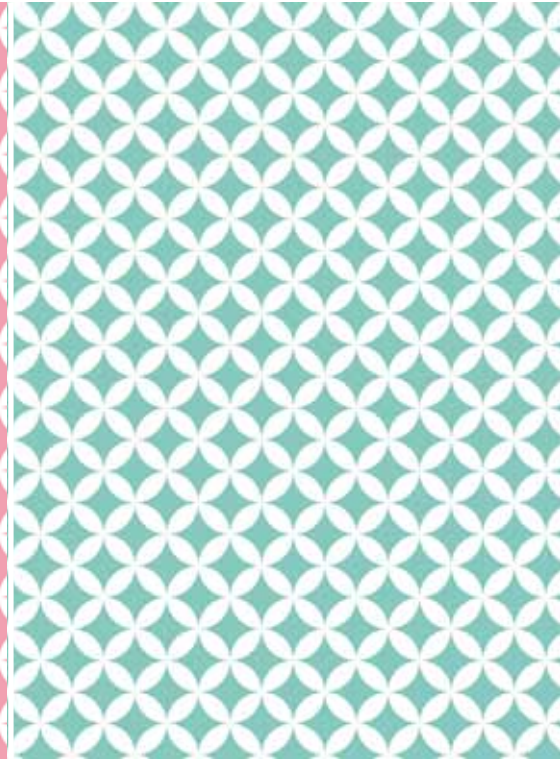
ELLIOTT GREY



ELLIOTT PINK



ELLIOTT GREEN



cm ↔ m m   
**45** 2 13469 15 13470

cm ↔ m m   
**45** 2 13467 15 13468

cm ↔ m m   
**45** 2 13471 15 13472

ALBA



OLIVIA



FIESTA



cm ↔ m m   
**45** 2 11784 15 11783  
**67,5** 15 11785

cm ↔ m m   
**45** 2 11644 15 11643  
**67,5** 15 11645  
**90** 15 11647

cm ↔ m m   
**45** 2 11540 15 11539  
**67,5** 15 11541  
**90** 15 11543

ROMBO



cm ↔	m ↻	m ↻
45	2 11604	15 11603
67,5		15 11605

OLIVES



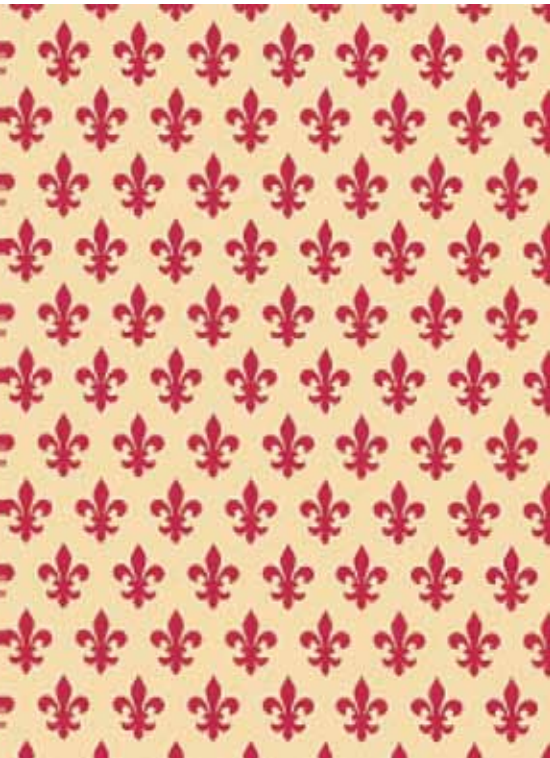
cm ↔	m ↻	m ↻
45	2 11550	15 11549
67,5		15 11551

LILY GOLD



cm ↔	m ↻	m ↻
45	2 11520	15 11519
67,5		15 11521

LILY RED



cm ↔	m ↻	m ↻
45	2 11480	15 11479

LILY BROWN



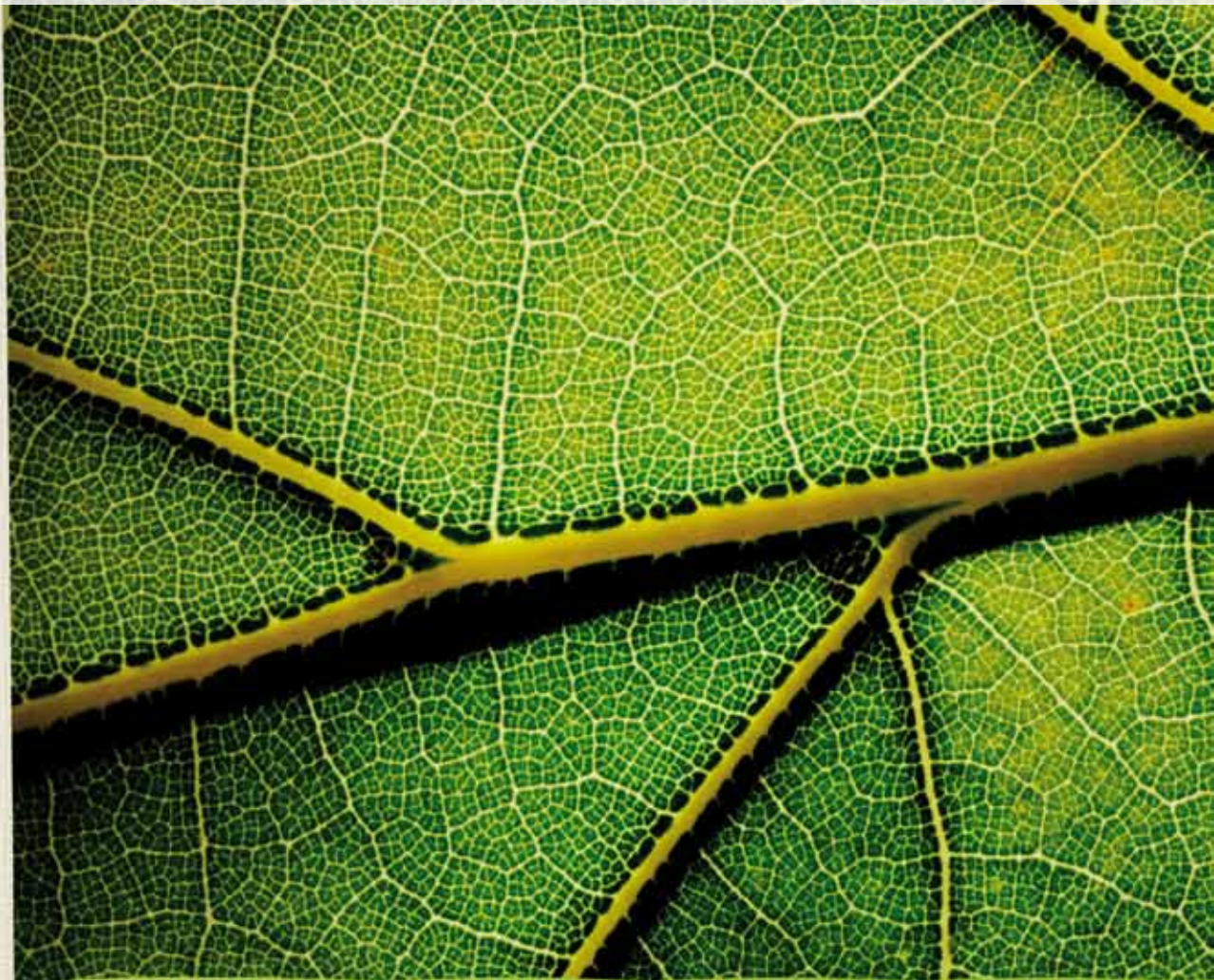
cm ↔	m ↻	m ↻
45	2 11470	15 11469

LILY GREEN



cm ↔	m ↻	m ↻
45	2 12022	15 12021
67,5	2 12024	15 12023
90	2 12026	15 12025

## NATURE



## CONSTRUCTION



PVC-Foil, transparent and opaque, plain, printed, with or without structure

Solvent-free adhesive

Backing paper

## CHARACTERISTICS

- Decorative
- Multipurpose usage
- Lightfast
- Easy to clean
- Easy to use

BAMBOO



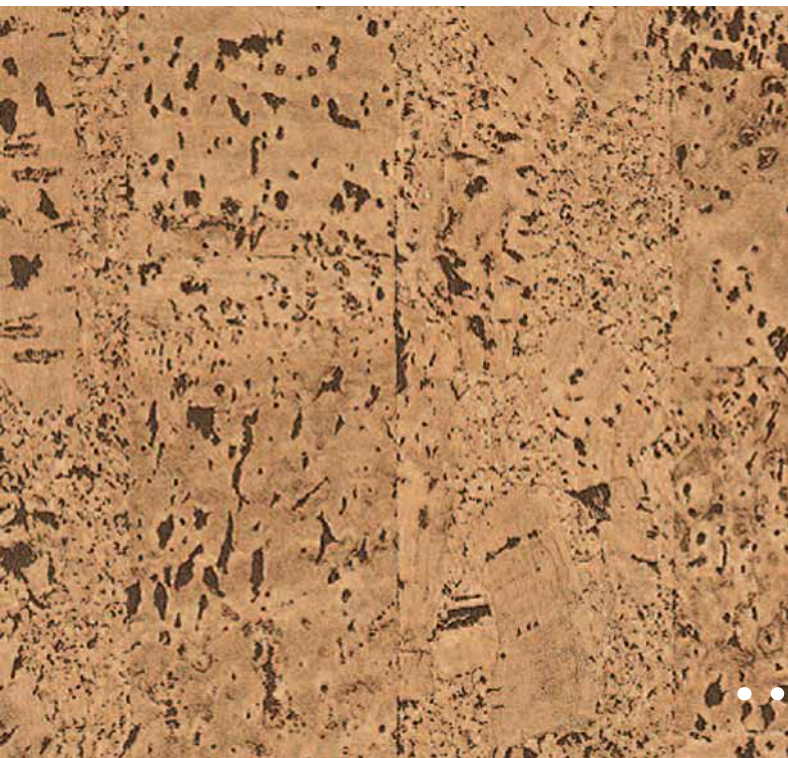
cm ↔	m ↻	m ↻
45	2 10243	15 10242
67,5	2 10596	15 10595
90	2 10598	15 10597

BASKET

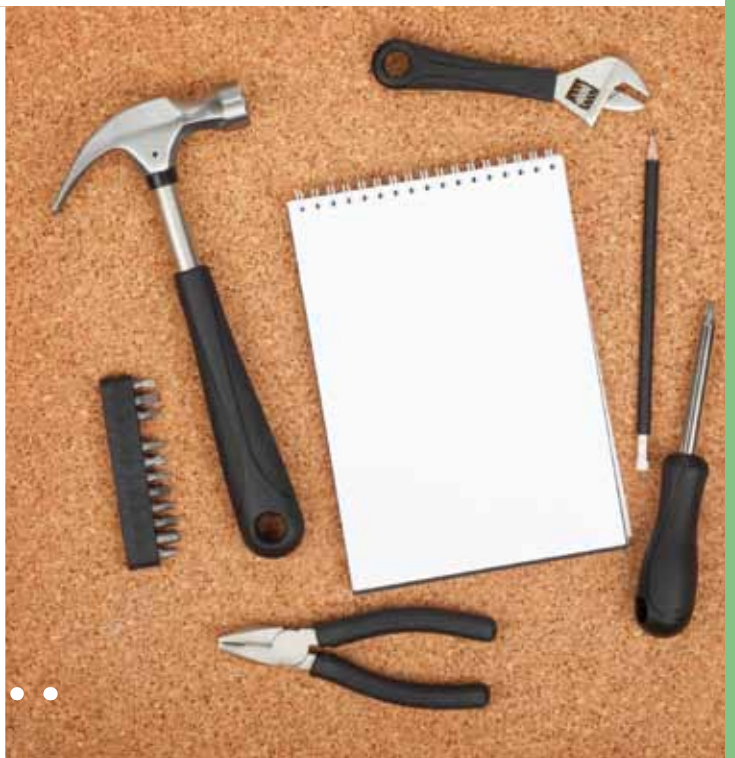


cm ↔	m ↻	m ↻
45	2 11714	15 11713
67,5		15 11715
90		15 11717

CORK



cm ↔	m ↻	m ↻
45	2 10136	15 10137
67,5	2 11014	15 11013
90	2 11016	15 11015



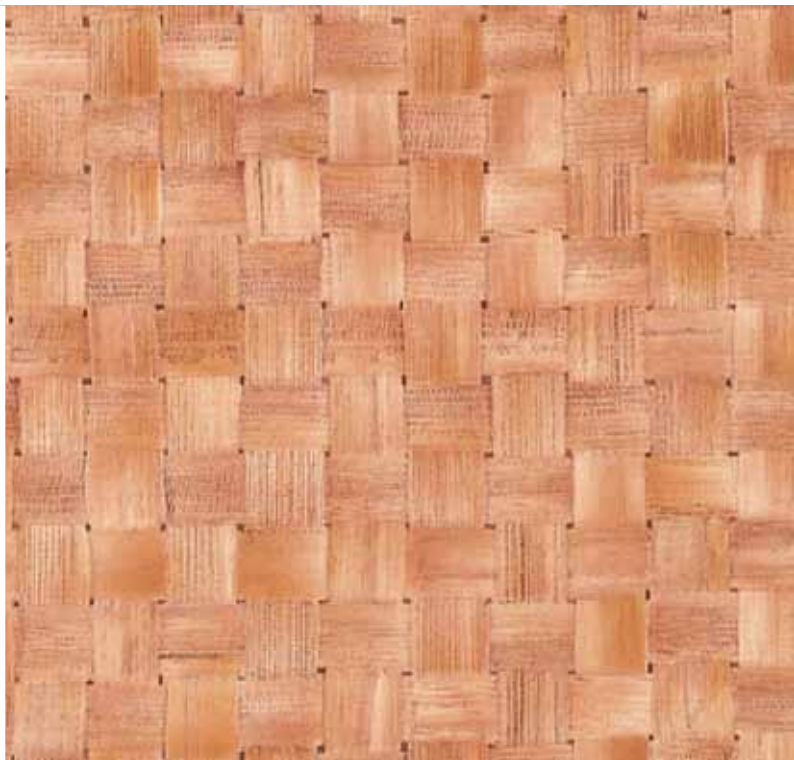
# NATURE

PAILLE DARK



cm ↔	m ↻		m ↻	
45	2	10176	15	10177
67,5			15	10829
90			15	10831

PAILLE LIGHT



cm ↔	m ↻		m ↻	
45	2	10178	15	10179
67,5			15	10821
90			15	10823

GRASS



cm ↔	m ↻		m ↻	
45	2	11564	15	11563
67,5	2	11566	15	11565
90			15	11567

JUTE



cm ↔	m ↻		m ↻	
45	2	10158	15	10159
67,5			15	10893
90			15	10895

LEAVES



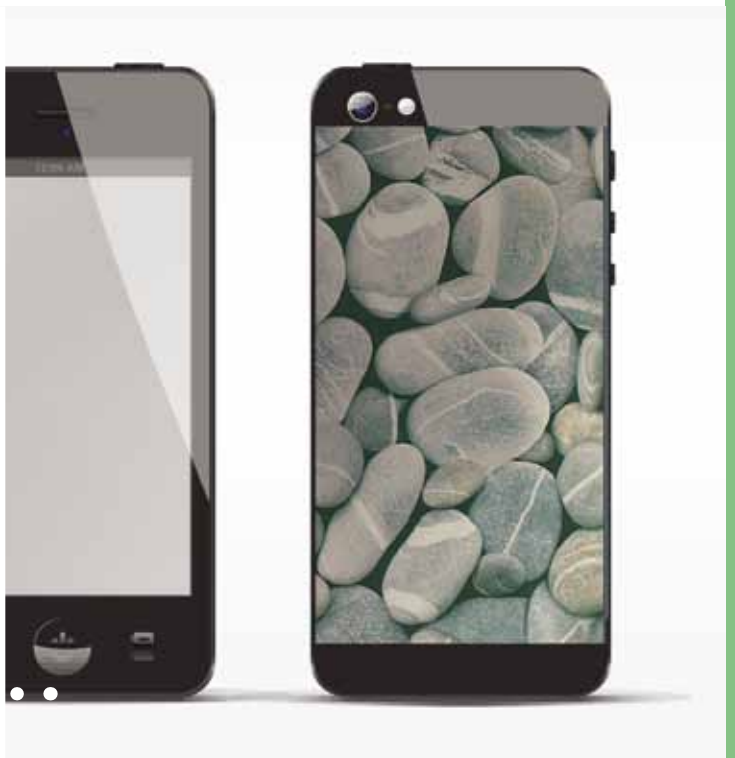
CLOUDY SKY



cm ↔	m ↻	m ↻
<b>45</b>	2 10194	15 10195
<b>67,5</b>	15 10765	
<b>90</b>	2 10768	15 10767

cm ↔	m ↻	m ↻
<b>45</b>	2 11500	15 11499
<b>67,5</b>		15 11501
<b>90</b>		15 11503

STONES



cm ↔	m ↻	m ↻
<b>45</b>	2 10192	15 10193
<b>67,5</b>	2 10774	15 10773
<b>90</b>	2 10776	15 10775

# NATURE

OXIDIZED STEEL BLUE



cm ↔	m	m
45	2 12639	15 12640

OXIDIZED STEEL



cm ↔	m	m
45	2 12637	15 12638



GREEK STONE



cm ↔	m	m
45	2 12680	15 12681

LOGS



cm ↔	m	m
45	2 11614	15 11613
67,5		15 11615
90	2 11618	15 11617

ROSES



cm ↔	m	m
45	2 12678	15 12679

ROSES YELLOW



cm ↔	m	m
45	2 12857	15 12858

ROSES WHITE GREY



cm ↔	m	m
45	2 12855	15 12856





**CONSTRUCTION**

PVC-Foil, transparent and opaque, plain, printed, with or without structure

Solvent-free adhesive

Backing paper

**CHARACTERISTICS**

- Decorative
- Multipurpose usage
- Lightfast
- Easy to clean
- Easy to use

MAPLE



MAPLE LIGHT



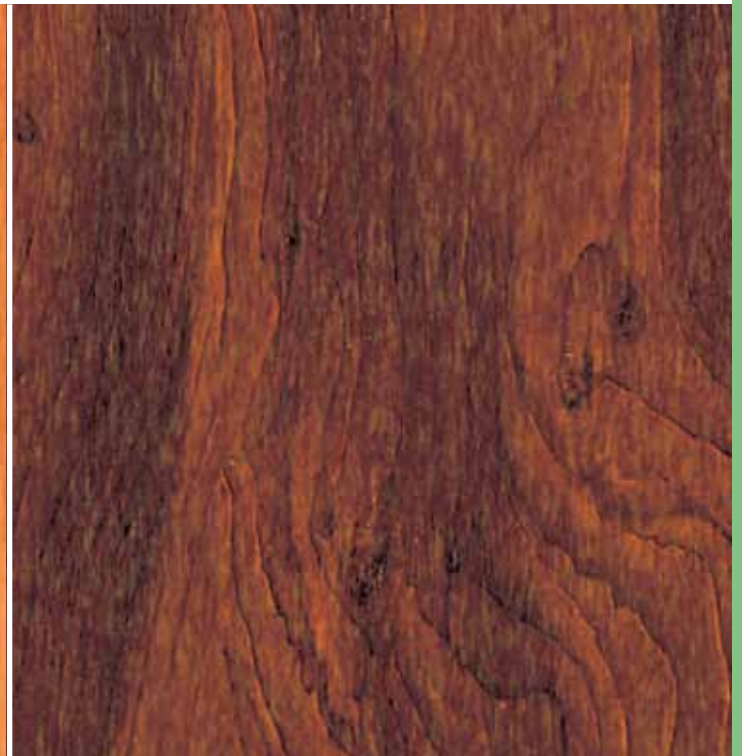
cm ↔	m ↗	m ↘
<b>45</b>	2 10154	15 10155
<b>67,5</b>	2 10910	15 10909
<b>90</b>	2 10912	15 10911

cm ↔	m ↗	m ↘
<b>45</b>	2 10166	15 10167
<b>67,5</b>		15 10861
<b>90</b>		15 10863

MAPLE MEDIUM



MAPLE DARK

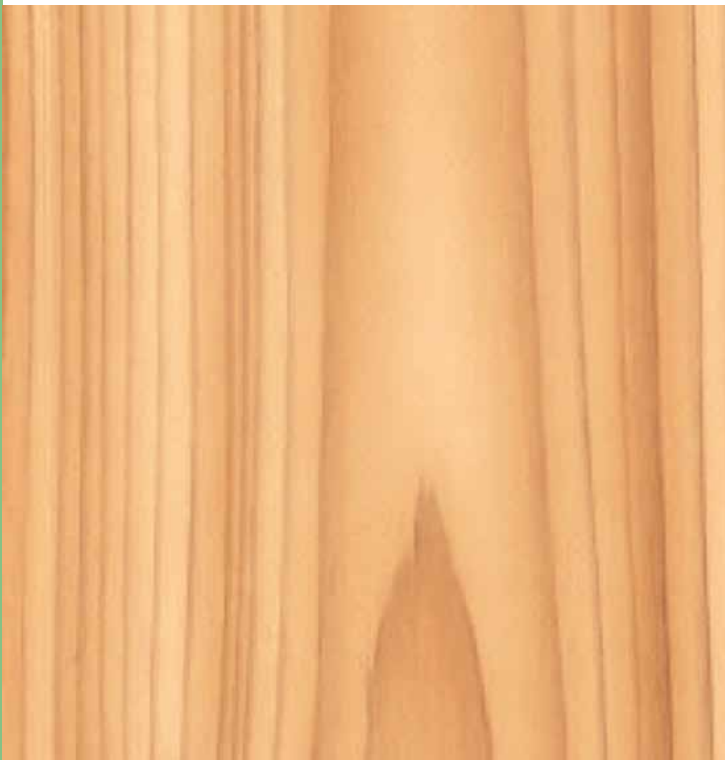


cm ↔	m ↗	m ↘
<b>45</b>	2 10088	15 10089
<b>67,5</b>		15 11163
<b>90</b>		15 11165

cm ↔	m ↗	m ↘
<b>45</b>	2 10241	15 10239
<b>67,5</b>	2 10604	15 10603
<b>90</b>		15 10605

WOOD

PINE



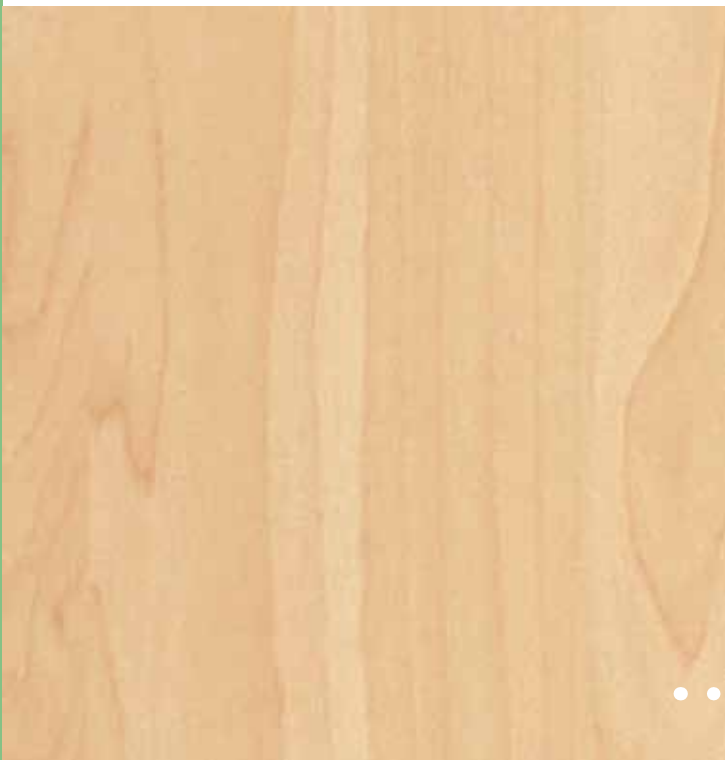
WHITE STRUCTURE



cm ↔	m ↻	m ↻
45	2 10138	15 10139
67,5	2 11006	15 11005
90	2 11008	15 11007

cm ↔	m ↻	m ↻
45	2 10114	15 10115
67,5	2 11094	15 11093
90	2 11094	15 11095

BEECH PALE NATURE



cm ↔	m ↻	m ↻
45	2 10086	15 10087
67,5	2 11174	15 11171
90	2 11174	15 11173

PEARTREE



cm ↔	m ↗		m ↘	
<b>45</b>	2	10174	15	10175
<b>67,5</b>			15	11863
<b>90</b>			15	11865

PEARTREE MEDIUM



PEARTREE LIGHT



cm ↔	m ↗		m ↘	
<b>45</b>	2	10172	15	10173
<b>67,5</b>			15	10837
<b>90</b>			15	10839

cm ↔	m ↗		m ↘	
<b>45</b>	2	10170	15	10171
<b>67,5</b>			15	10845
<b>90</b>	2	10848	15	10847

# WOOD

FIR NATURAL



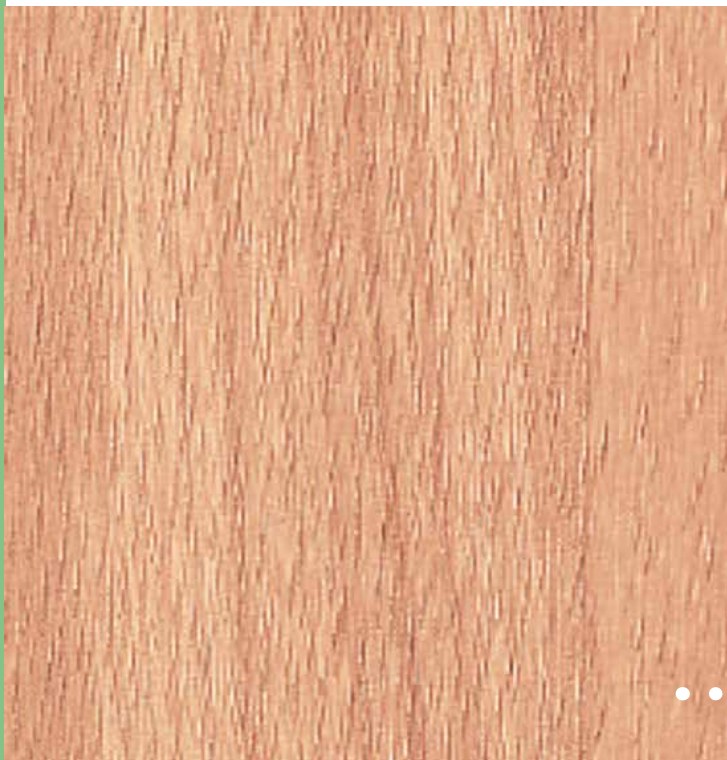
FIR PLANKED



cm ↔	m ↻	m ↻
45	2 10245	15 10244
67,5	2 10588	15 10587
90	2 10590	15 10589

cm ↔	m ↻	m ↻
45	2 10156	15 10157
67,5		15 10901
90		15 10903

FIR PLANKED NATURAL



cm ↔	m ↻	m ↻
45	2 10182	15 10183
67,5		15 10805
90		15 10807

OAK ROBUST



OAK PALE



cm ↔	m ↻	m ↻
<b>45</b>	2 10146	15 10147
<b>67,5</b>	2 10934	15 10933
<b>90</b>	2 10936	15 10935

cm ↔	m ↻	m ↻
<b>45</b>	2 10070	15 10071
<b>67,5</b>	2 11236	15 11235
<b>90</b>	2 11238	15 11237

OAK NATURAL MEDIUM



OAK TRONCAIS MEDIUM



OAK WHITE



cm ↔	m ↻	m ↻
<b>45</b>	2 10180	15 10181
<b>67,5</b>	2 10814	15 10813
<b>90</b>	2 10815	15 10815

cm ↔	m ↻	m ↻
<b>45</b>	2 10072	15 10073
<b>67,5</b>	2 11228	15 11227
<b>90</b>	2 11230	15 11229

cm ↔	m ↻	m ↻
<b>45</b>	2 10234	15 10233
<b>67,5</b>	2 10628	15 10627
<b>90</b>	2 10630	15 10629

# WOOD

OAK RED



OAK NATURAL DARK



cm ↔	m ↻	m ↻
45	2 10150	15 10151
67,5	2 10918	15 10917
90	2 10918	15 10919

cm ↔	m ↻	m ↻
45	2 11754	15 11753
67,5	2 11756	15 11755
90	2 11756	15 11757

OAK SILVER-GREY



cm ↔	m ↻	m ↻
45	2 10068	15 10069
67,5	2 11244	15 11243
90	2 11246	15 11245

OAK NATURAL LIGHT



OAK RUSTIC



cm ↔	m ↻	m ↻
<b>45</b>	2 10148	15 10149
<b>67,5</b>	2 10925	15 10925
<b>90</b>	2 10928	15 10927

cm ↔	m ↻	m ↻
<b>45</b>	2 10186	15 10187
<b>67,5</b>	2 10790	15 10789
<b>90</b>	2 10792	15 10791

OAK PLANKED PALE



CHERRY PALE



HEMLOCK MEDIUM



cm ↔	m ↻	m ↻
<b>45</b>	2 10162	15 10163
<b>67,5</b>	2 10877	15 10877
<b>90</b>	2 10879	15 10879

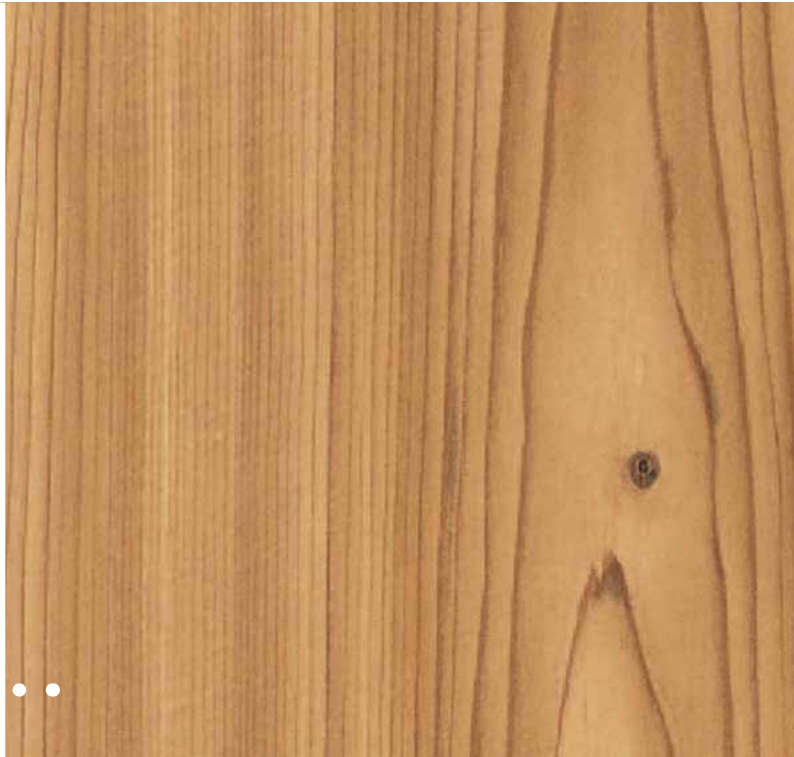
cm ↔	m ↻	m ↻
<b>45</b>	2 10084	15 10085
<b>67,5</b>	2 11180	15 11179
<b>90</b>	2 11182	15 11181

cm ↔	m ↻	m ↻
<b>45</b>	2 10080	15 10081
<b>67,5</b>	2 11195	15 11195
<b>90</b>	2 11197	15 11197



WOOD

SPRUCE LIGHT



cm ↔	m ↻		m ↻	
45	2	10078	15	10079
67,5	2	11203	15	11203
90	2	11206	15	11205

ACACIA



MAHOGANY



cm ↔	m ↻		m ↻	
45	2	12755	15	12756
67,5	2	12757	15	12758
90	2	12759	15	12760

cm ↔	m ↻		m ↻	
45	2	10064	15	10065
67,5	2	11260	15	11259
90	2	11262	15	11261

MAHOGANY LIGHT



WALNUT



cm ↔	m ↻	m ↻	m ↻
<b>45</b>	2	10062	15 10063
<b>67,5</b>	2	11268	15 11267
<b>90</b>	2	11270	15 11269

cm ↔	m ↻	m ↻	m ↻
<b>45</b>	2	10074	15 10075
<b>67,5</b>	2	11220	15 11219
<b>90</b>	2	11222	15 11221

WALNUT DEEP



APPLE TREE RED



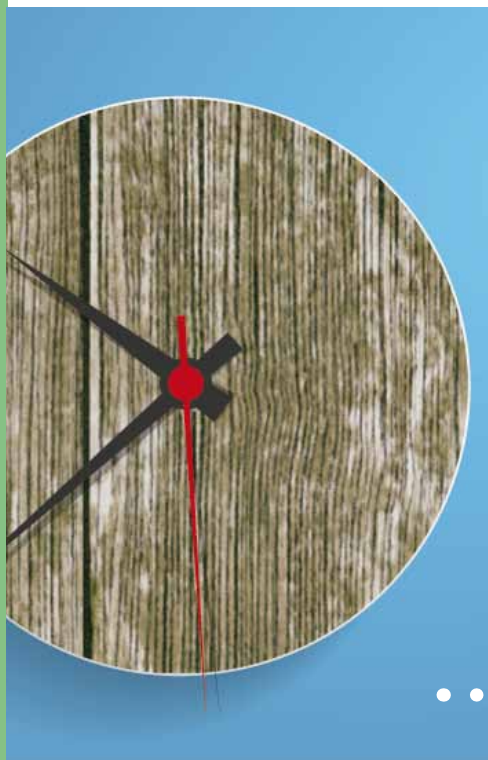
cm ↔	m ↻	m ↻	m ↻
<b>45</b>	2	10160	15 10161
<b>67,5</b>			15 10885
<b>90</b>			15 10887

cm ↔	m ↻	m ↻	m ↻
<b>45</b>	2	10196	15 10197
<b>67,5</b>	2	10758	15 10757
<b>90</b>			15 10759

WOOD

RURAL

ELM JAPANESE



cm ↔	m		m	
<b>45</b>	2	11624	15	11623
<b>67,5</b>	2	11626	15	11625
<b>90</b>			15	11627

cm ↔	m		m	
<b>45</b>	2	10144	15	10145
<b>67,5</b>			15	10981
<b>90</b>			15	10983

ROSEWOOD MEDIUM

ROSEWOOD PALE



cm ↔	m		m	
<b>45</b>	2	10092	15	10093
<b>67,5</b>	2	11148	15	11147
<b>90</b>			15	11149

cm ↔	m		m	
<b>45</b>	2	10090	15	10091
<b>67,5</b>	2	11156	15	11155
<b>90</b>			15	11157

BOATDECK



PALISANDER



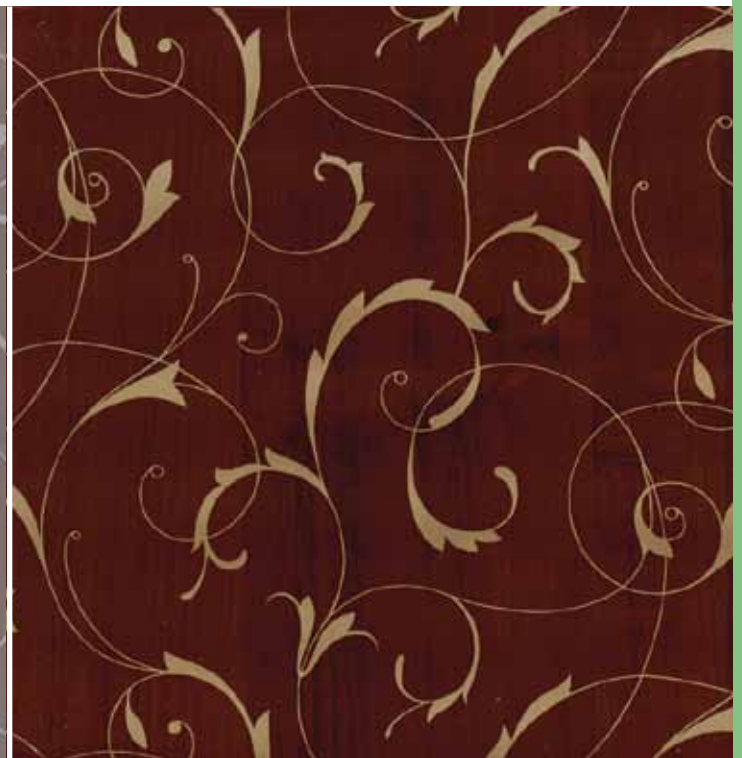
cm ↔	m ↻	m ↻
<b>45</b>	2 10232	15 10231
<b>67,5</b>		15 10635
<b>90</b>		15 10637

cm ↔	m ↻	m ↻
<b>45</b>	2 11878	15 11877
<b>67,5</b>	2 11880	15 11879
<b>90</b>		15 11881

SCROLL OVERPRINT BLUE/GREY



SCROLL OVERPRINT BROWN/GOLD



cm ↔	m ↻	m ↻
<b>45</b>	2 11923	15 11922
<b>67,5</b>		15 11924
<b>90</b>		15 11926

cm ↔	m ↻	m ↻
<b>45</b>	2 10230	15 10229
<b>67,5</b>	2 10644	15 10643
<b>90</b>	2 10646	15 10645

# WOOD

ASH WHITE



WOOD BLACK



cm ↔	m		m	
45	2	10076	15	10077
67,5	2	11212	15	11211
90			15	11213

cm ↔	m		m	
45	2	10096	15	10097
67,5	2	11140	15	11139
90			15	11141

ALDER LIGHT



ALDER



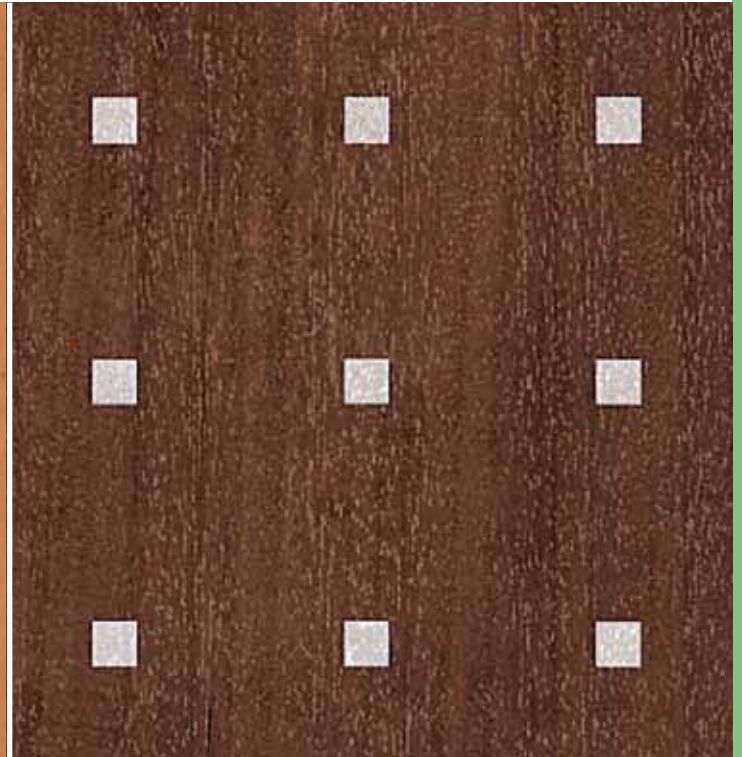
cm ↔	m		m	
45	2	10168	15	10169
67,5			15	10853
90			15	10855

cm ↔	m		m	
45	2	10066	15	10067
67,5	2	11252	15	11251
90			15	11253

ALDER MEDIUM



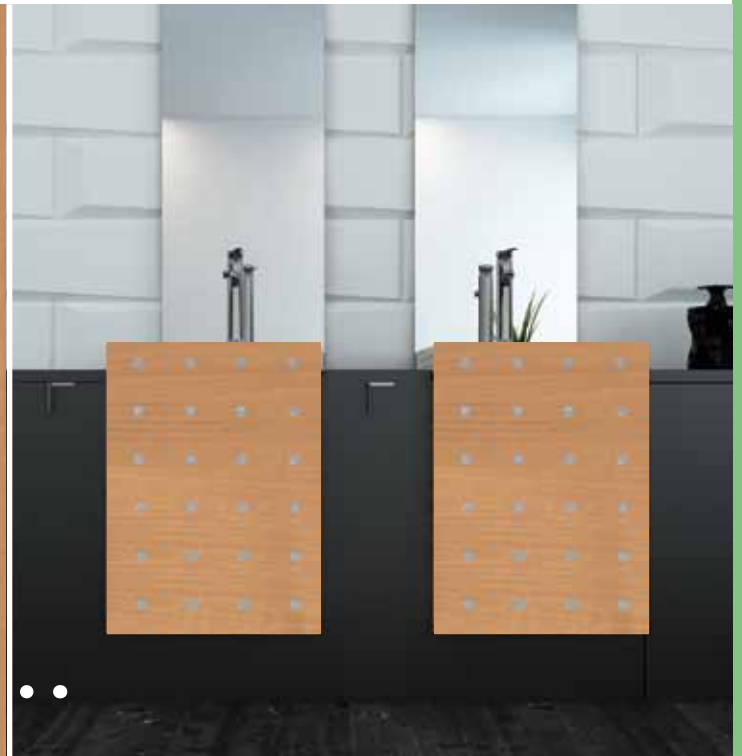
ALDER DEEP CARRE



cm ↔	m ↗	m ↘
<b>45</b>	2 10082	15 10083
<b>67,5</b>	2 11188	15 11187
<b>90</b>		15 11189

cm ↔	m ↗	m ↘
<b>45</b>	2 10198	15 10199
<b>67,5</b>	2 10750	15 10749
<b>90</b>		15 10751

ALDER MEDIUM CARRE



cm ↔	m ↗	m ↘
<b>45</b>	2 11634	15 11633
<b>67,5</b>		15 11635
<b>90</b>		15 11637

## WOOD

OLD WOOD



cm ↔	m ↗		m ↘	
45	2	12904	15	12905
67,5			15	12906
90			15	12907

SCRAPWOOD



cm ↔	m ↗		m ↘	
45	2	12877	15	12878
67,5			15	12879
90			15	12880

SCRAPWOOD LIGHT



cm ↔	m ↗		m ↘	
45	2	13403	15	13406
67,5	2	13404	15	13407
90	2	13405	15	13408

SCRAPWOOD DARK



cm ↔	m ↗		m ↘	
45	2	13397	15	13400
67,5	2	13398	15	13401
90	2	13399	15	13402

ZINGANA



cm ↔	m ↻	m ↻
<b>45</b>	2 13501	15 13502
<b>67,5</b>	2 13503	15 13504
<b>90</b>	2 13505	15 13506

ZINGANA LIGHT



cm ↔	m ↻	m ↻
<b>45</b>	2 13507	15 13508
<b>67,5</b>	2 13509	15 13510
<b>90</b>	2 13511	15 13512

SCRAP



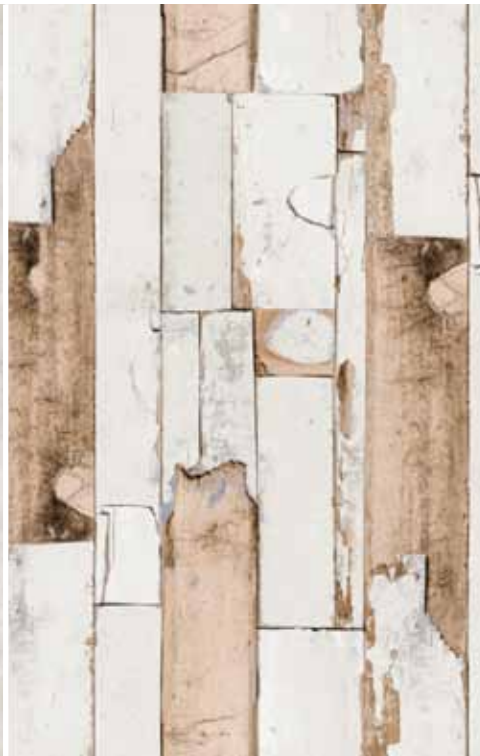
cm ↔	m ↻	m ↻
<b>45</b>	2 13513	15 13514
<b>67,5</b>	2 13515	15 13516
<b>90</b>	2 13517	15 13518

SCRAP LIGHT



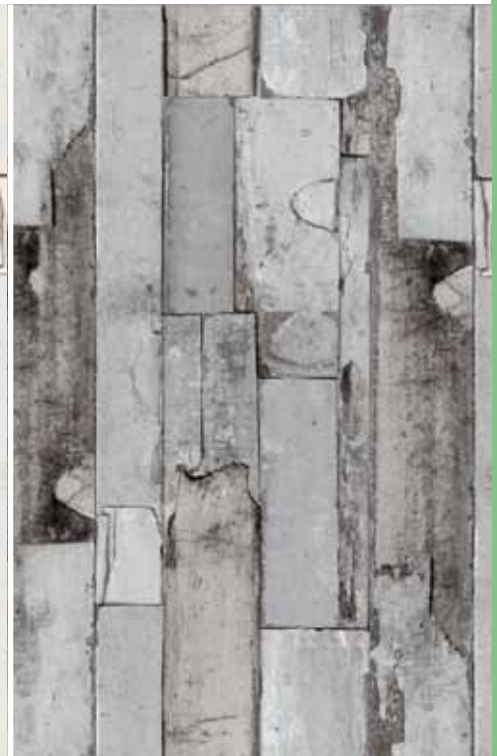
cm ↔	m ↻	m ↻
<b>45</b>	2 13519	15 13520
<b>67,5</b>	2 13521	15 13522
<b>90</b>	2 13523	15 13524

DOOR



cm ↔	m ↻	m ↻
<b>45</b>	2 13525	15 13526
<b>67,5</b>	2 13527	15 13528
<b>90</b>	2 13529	15 13530

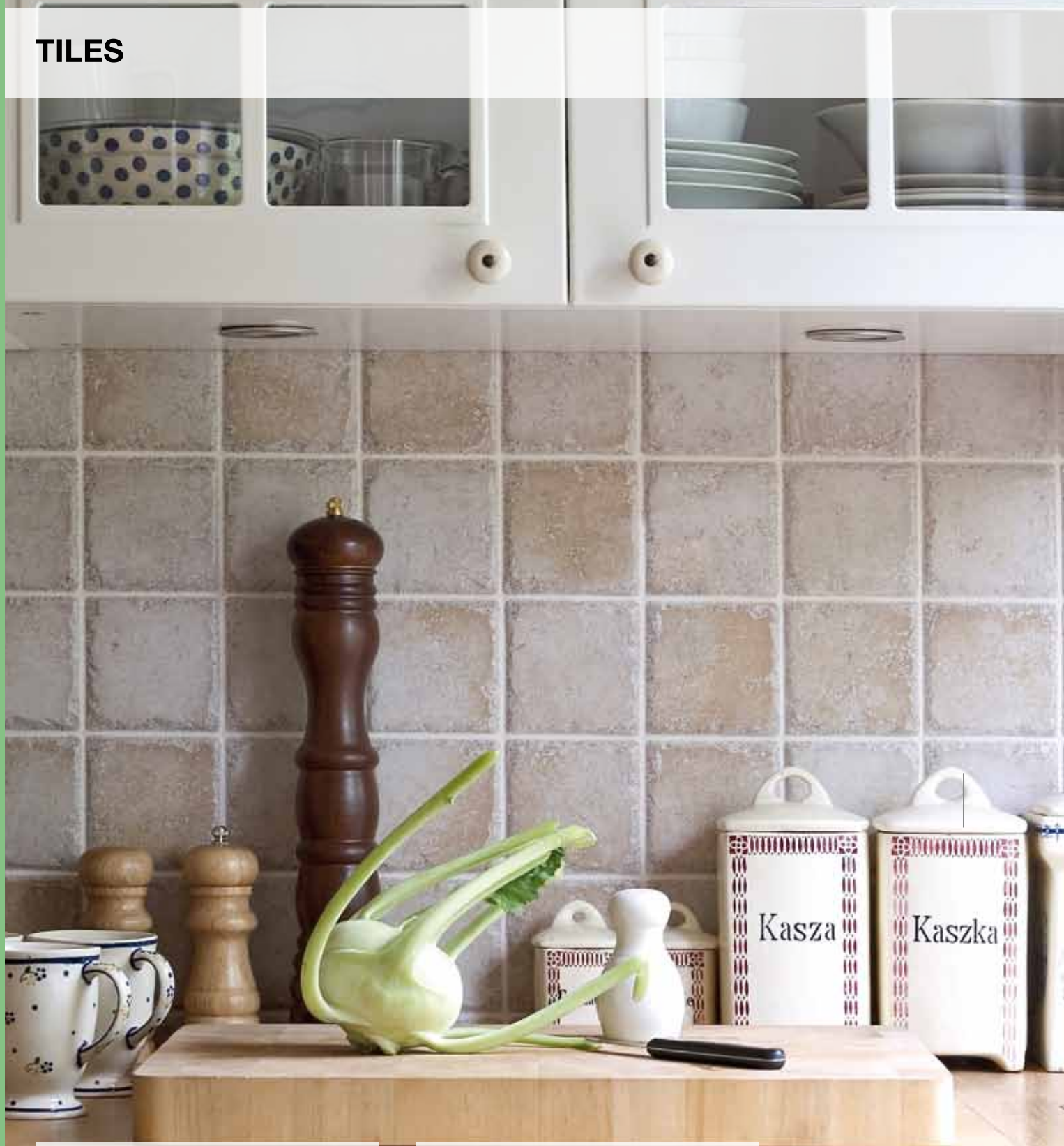
DOOR DARK



cm ↔	m ↻	m ↻
<b>45</b>	2 13531	15 13532
<b>67,5</b>	2 13533	15 13534
<b>90</b>	2 13535	15 13536



## TILES



## CONSTRUCTION



PVC-Foil, transparent and opaque, plain, printed, with or without structure

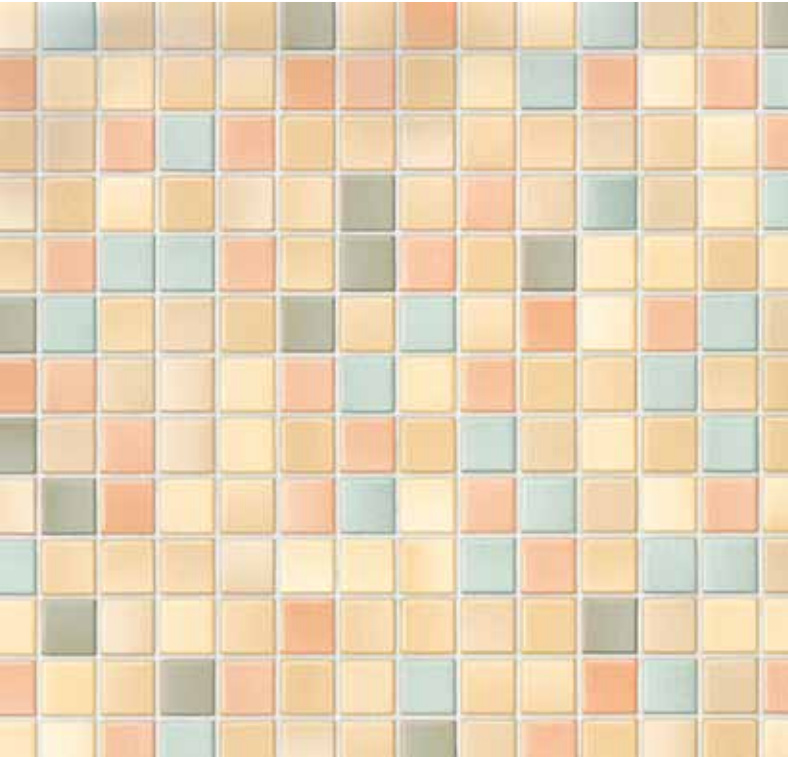
Solvent-free adhesive

Backing paper

## CHARACTERISTICS

- Decorative
- Multipurpose usage
- Lightfast
- Easy to clean
- Easy to use

PIENZA



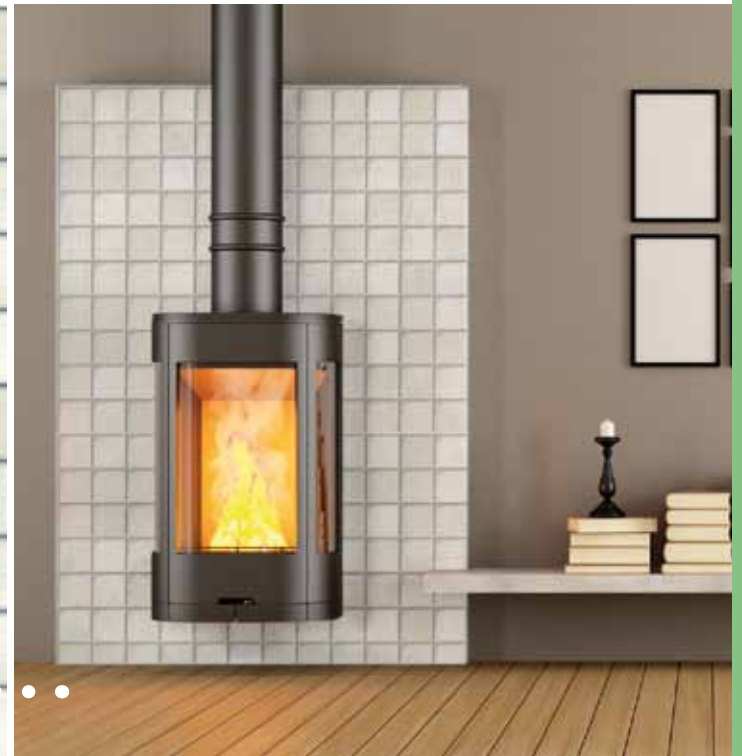
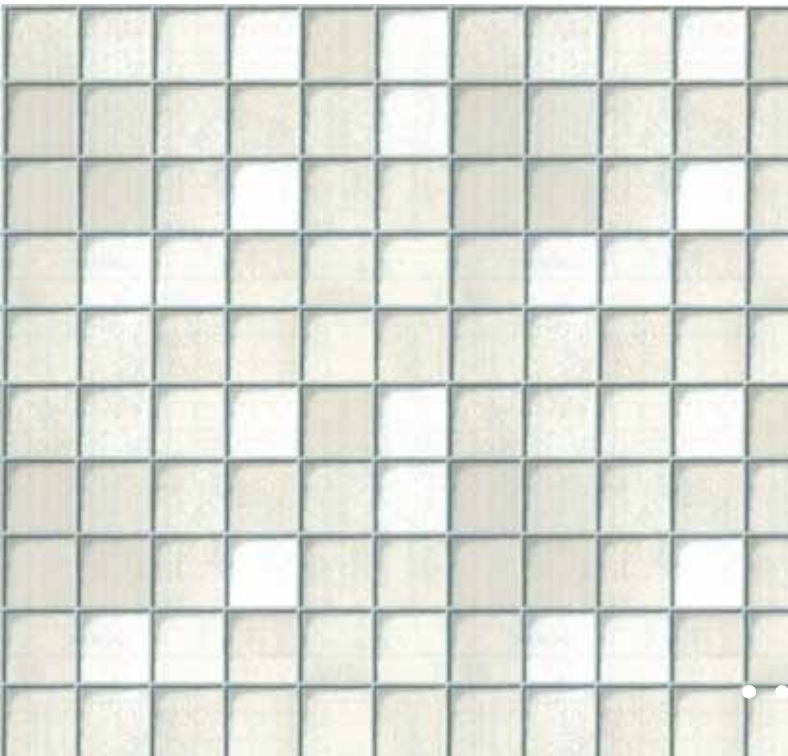
CETONA BEIGE



cm ↔	m <sup>2</sup>	m <sup>2</sup>
<b>45</b>	2 10202	15 10203
<b>67,5</b>	2 10734	15 10733
<b>90</b>	2 10736	15 10735

cm ↔	m <sup>2</sup>	m <sup>2</sup>
<b>45</b>	2 11744	15 11743
<b>67,5</b>	2 11746	15 11745
<b>90</b>		15 11747

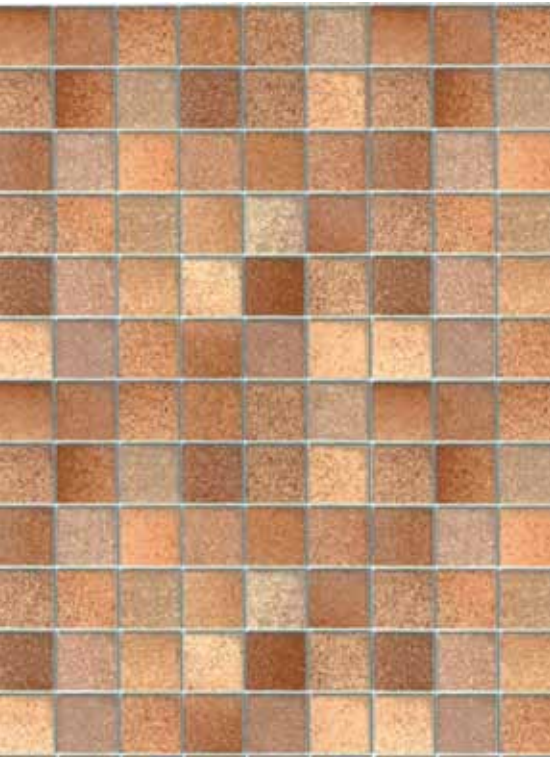
TOSCANA WHITE



cm ↔	m <sup>2</sup>	m <sup>2</sup>
<b>45</b>	2 11510	15 11509
<b>67,5</b>		15 11511
<b>90</b>		15 11513



TOSCANA BROWN



cm ↔	m	m
45	2 11704	15 11703
67,5		15 11705
90		15 11707

POT BROWN



cm ↔	m	m
45	2 10217	15 10216

FRUIT



cm ↔	m	m
45	2 11844	15 11843

MILANO GREY



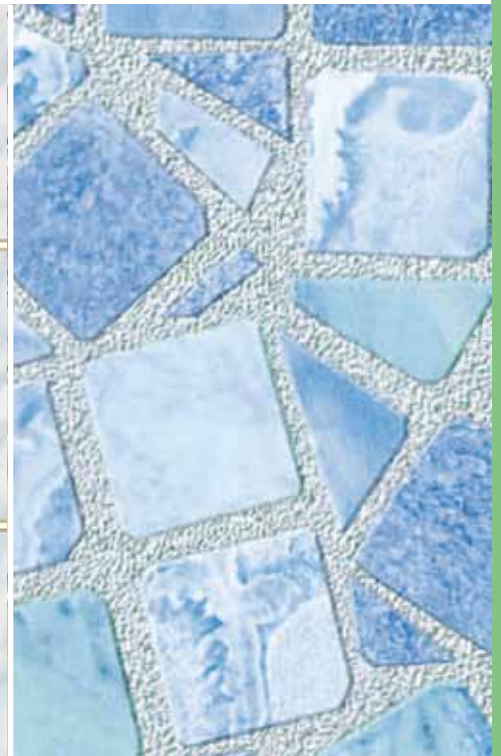
cm ↔	m	m
45	2 11654	15 11653

MILANO TURQUOISE



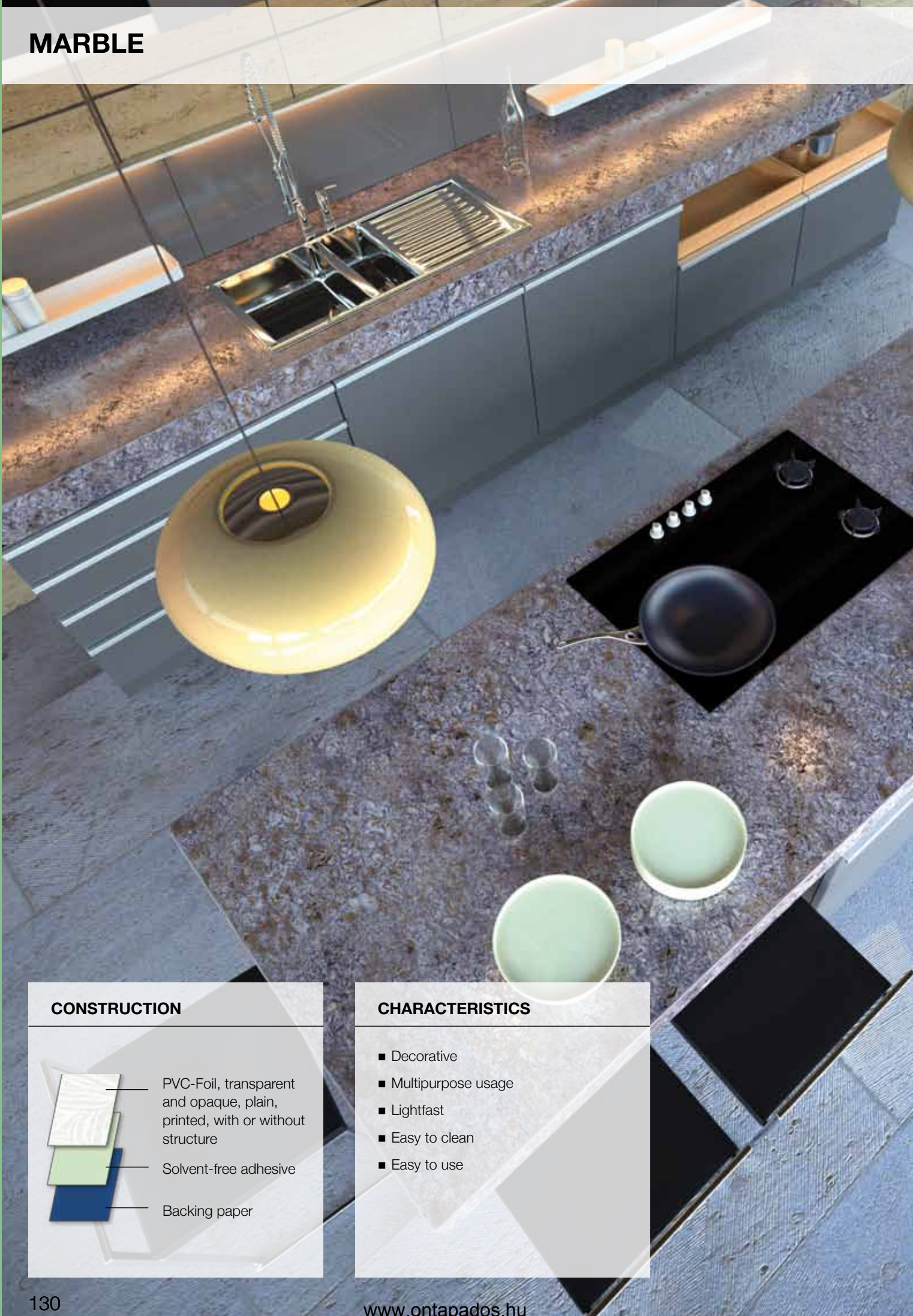
cm ↔	m	m
45	2 11660	15 11659

MOSAIC BLUE

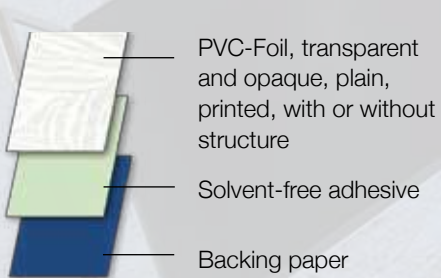


cm ↔	m	m
45	2 10200	15 10201
67,5	2 10742	15 10741
90		15 10743

**MARBLE**



**CONSTRUCTION**



**CHARACTERISTICS**

- Decorative
- Multipurpose usage
- Lightfast
- Easy to clean
- Easy to use

CARRARA GREEN



CARRARA GREY BLUE



cm ↔	m	m	m	m
<b>45</b>	2	12015	15	12016
<b>67,5</b>	2	12017	15	12018
<b>90</b>	2	12019	15	12020

cm ↔	m	m	m	m
<b>45</b>	2	12009	15	12010
<b>67,5</b>	2	12011	15	12012
<b>90</b>	2	12013	15	12014

CARRARA LIGHT BEIGE



CARRARA GREY BEIGE

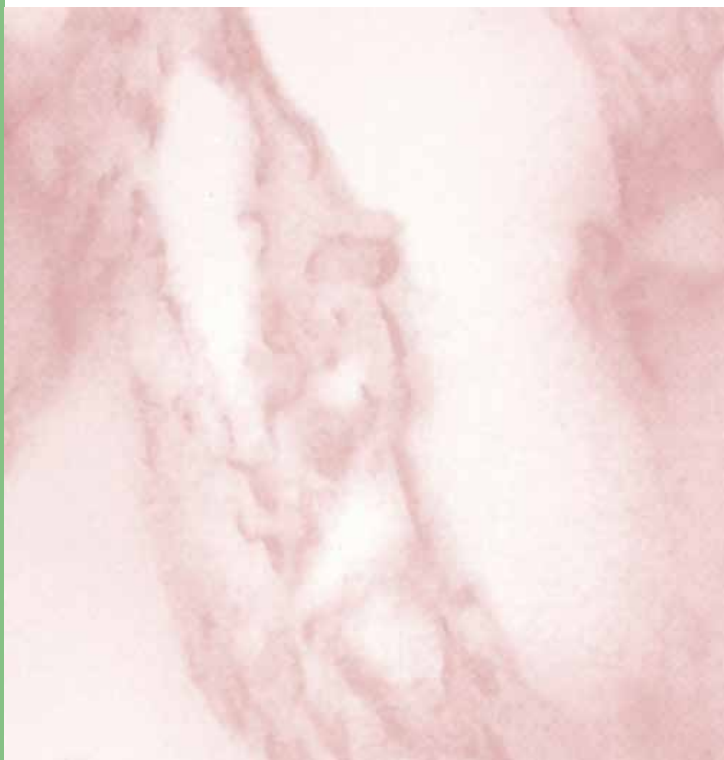


cm ↔	m	m	m	m
<b>45</b>	2	10126	15	10127
<b>67,5</b>	2	11054	15	11053
<b>90</b>			15	11055

cm ↔	m	m	m	m
<b>45</b>	2	10104	15	10105
<b>67,5</b>	2	10353	15	10418
<b>90</b>	2	10420	15	10419

## MARBLE

CARRARA RED



cm ↔	m ↗	m ↘
45	2 10213	15 10212
67,5	2 10702	15 10701
90		15 10703

CARRARA PINK



cm ↔	m ↗	m ↘
45	2 10106	15 10107
67,5		15 11123
90		15 11125

CARRARA LIGHT BLUE



cm ↔	m ↗	m ↘
45	2 10130	15 10131
67,5	2 11038	15 11037
90		15 11039

CARRARA BLUE



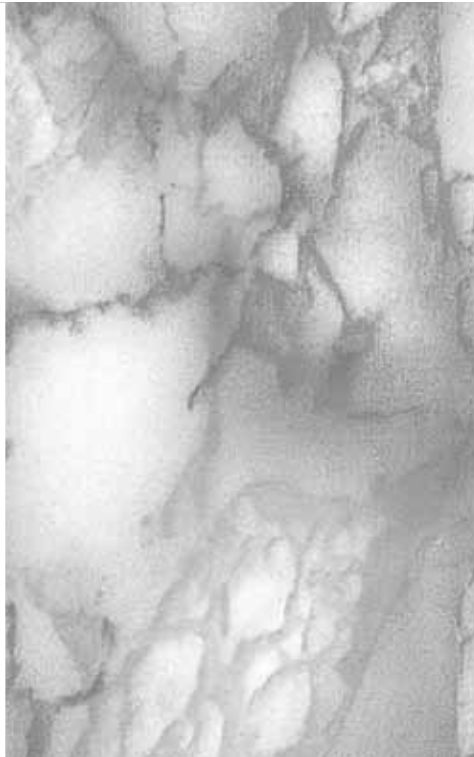
cm ↔	m ↗	m ↘
45	2 10211	15 10210
67,5		15 10709
90		15 10711

CARRARA BLACK



cm ↔	m		m	
<b>45</b>	2	10100	15	10101
<b>67,5</b>	2	10355	15	10404
<b>90</b>	2	10406	15	10405

CARRARA GREY



cm ↔	m		m	
<b>45</b>	2	10128	15	10129
<b>67,5</b>			15	11045
<b>90</b>			15	11047

CARRARA WHITE



cm ↔	m		m	
<b>45</b>	2	10098	15	10099
<b>67,5</b>	2	11132	15	11131
<b>90</b>	2	11134	15	11133

PERUGIA PINK



cm ↔	m		m	
<b>45</b>	2	10188	15	10189
<b>67,5</b>			15	10781
<b>90</b>			15	10783

SLATE GREY



cm ↔	m		m	
<b>45</b>	2	10124	15	10125
<b>67,5</b>			15	11061
<b>90</b>			15	11063

MODENA GREY



cm ↔	m		m	
<b>45</b>	2	10274	15	10273
<b>67,5</b>	2	10536	15	10535
<b>90</b>			15	10537



MARBLE

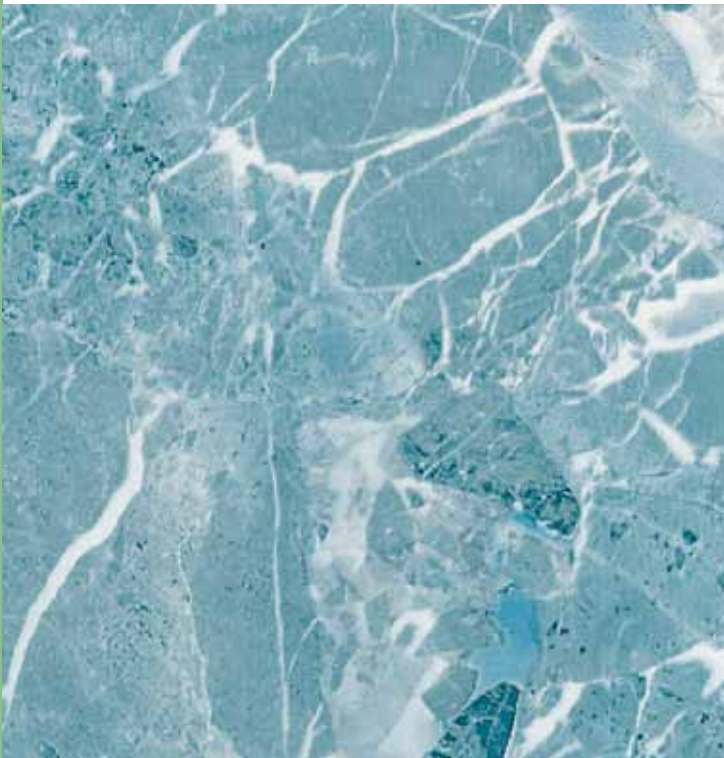


AREZZO NATURE

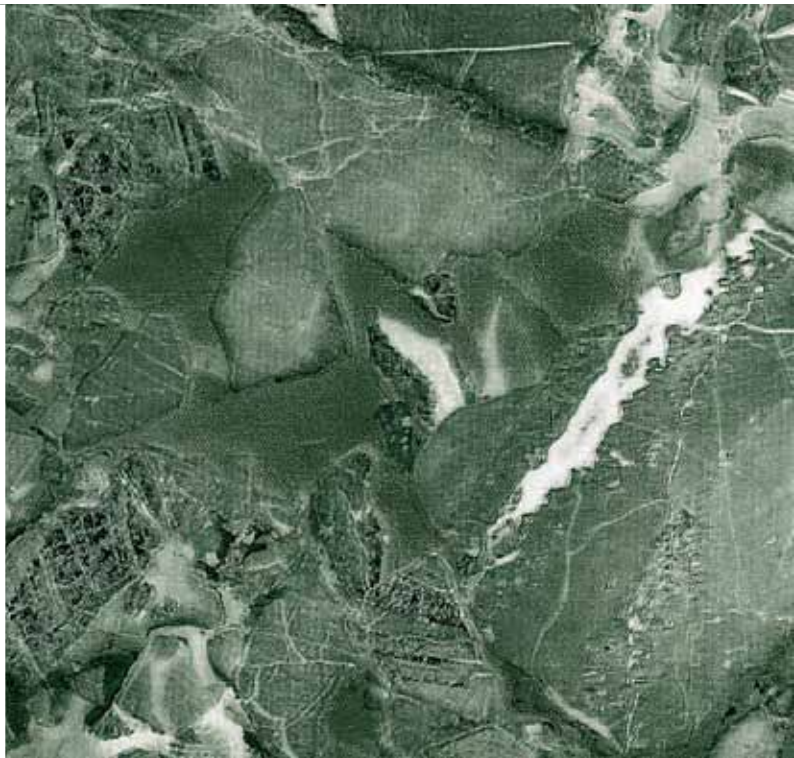


cm ↔	m ↻	m ↻
45	2 11594	15 11593
67,5	2 11596	15 11595
90		15 11597

AREZZO BLUE



AREZZO GREEN



cm ↔	m ↻	m ↻
45	2 11584	15 11583
67,5		15 11585
90		15 11587

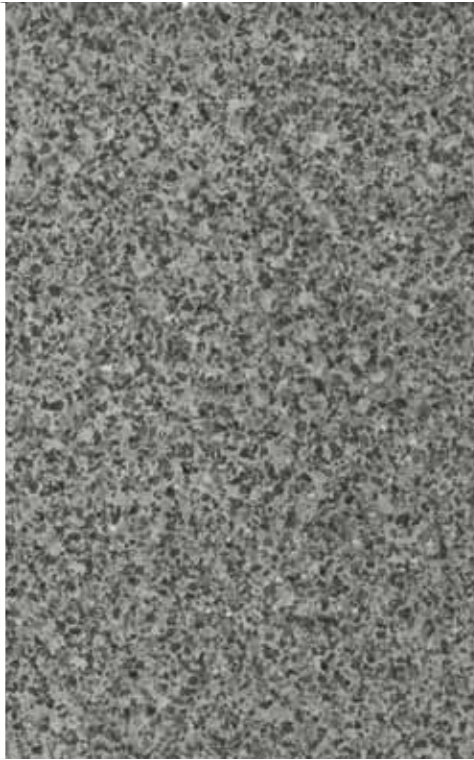
cm ↔	m ↻	m ↻
45	2 11574	15 11573
67,5		15 11575
90		15 11577

TERRAZZO



cm ↔	m	m
45	2 10220	15 10218
67,5	2 10684	15 10683
90	2 10686	15 10685

TERRAZZO SILVER GREY



cm ↔	m	m
45	2 13445	15 13497

TERRAZZO SILVER ANTHRACITE



cm ↔	m	m
45	2 13446	15 13498

TRAVETIN



cm ↔	m	m
45	2 10283	15 10282
67,5	2 10505	15 10504
90	2 10506	15 10506

GRANITE



cm ↔	m	m
45	2 10184	15 10185
67,5	2 10798	15 10797
90	2 10800	15 10799

CONCRETE



cm ↔	m	m
45	2 13427	15 13430
67,5	2 13428	15 13431
90	2 13429	15 13432

## BRICK



## CONSTRUCTION



PVC-Foil, transparent and opaque, plain, printed, with or without structure

Solvent-free adhesive

Backing paper

## CHARACTERISTICS

- Decorative
- Multipurpose usage
- Lightfast
- Easy to clean
- Easy to use

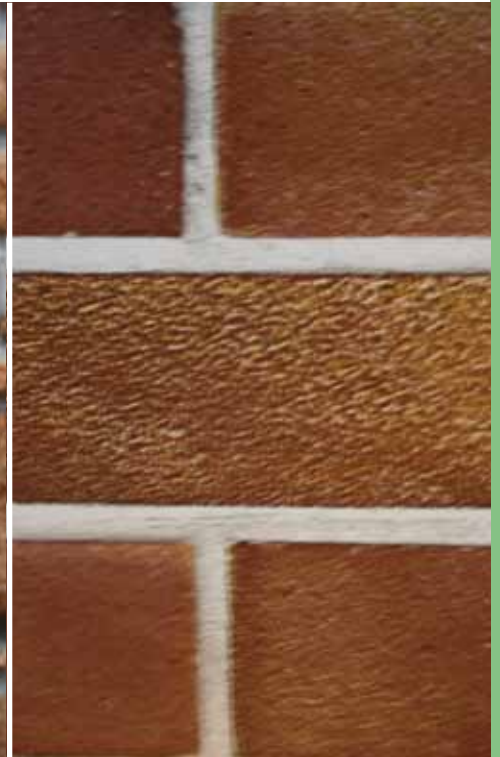
MEDITERRANEAN STONEWALL



STONE WALL



CLINKER



cm ↔	m	m	m	m
45	2	10164	15	10165
67,5			15	10869
90			15	10871

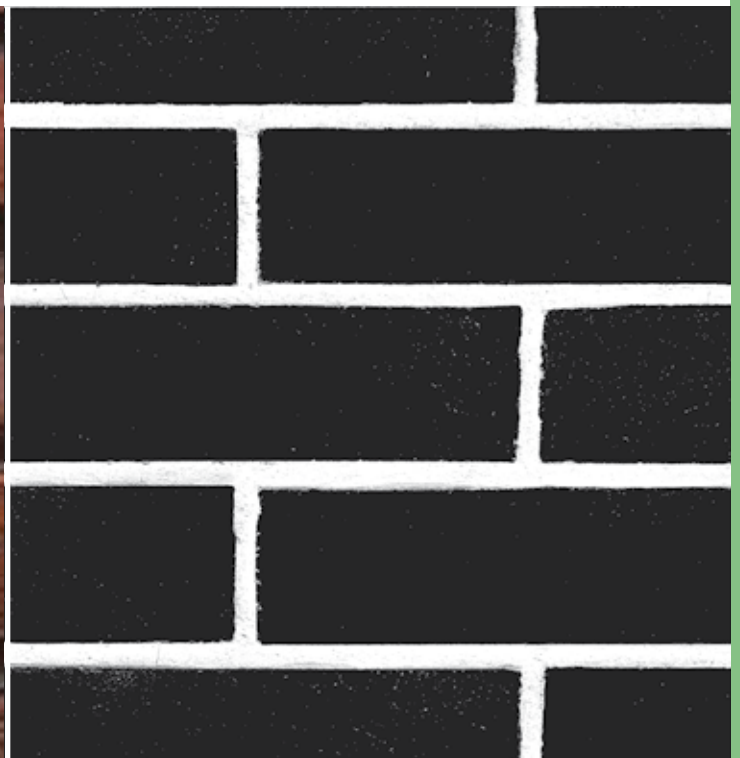
cm ↔	m	m	m	m
45	2	10226	15	10225
67,5			15	10659
90	2	10662	15	10661

cm ↔	m	m	m	m
45	2	11560	15	11559

BRICK



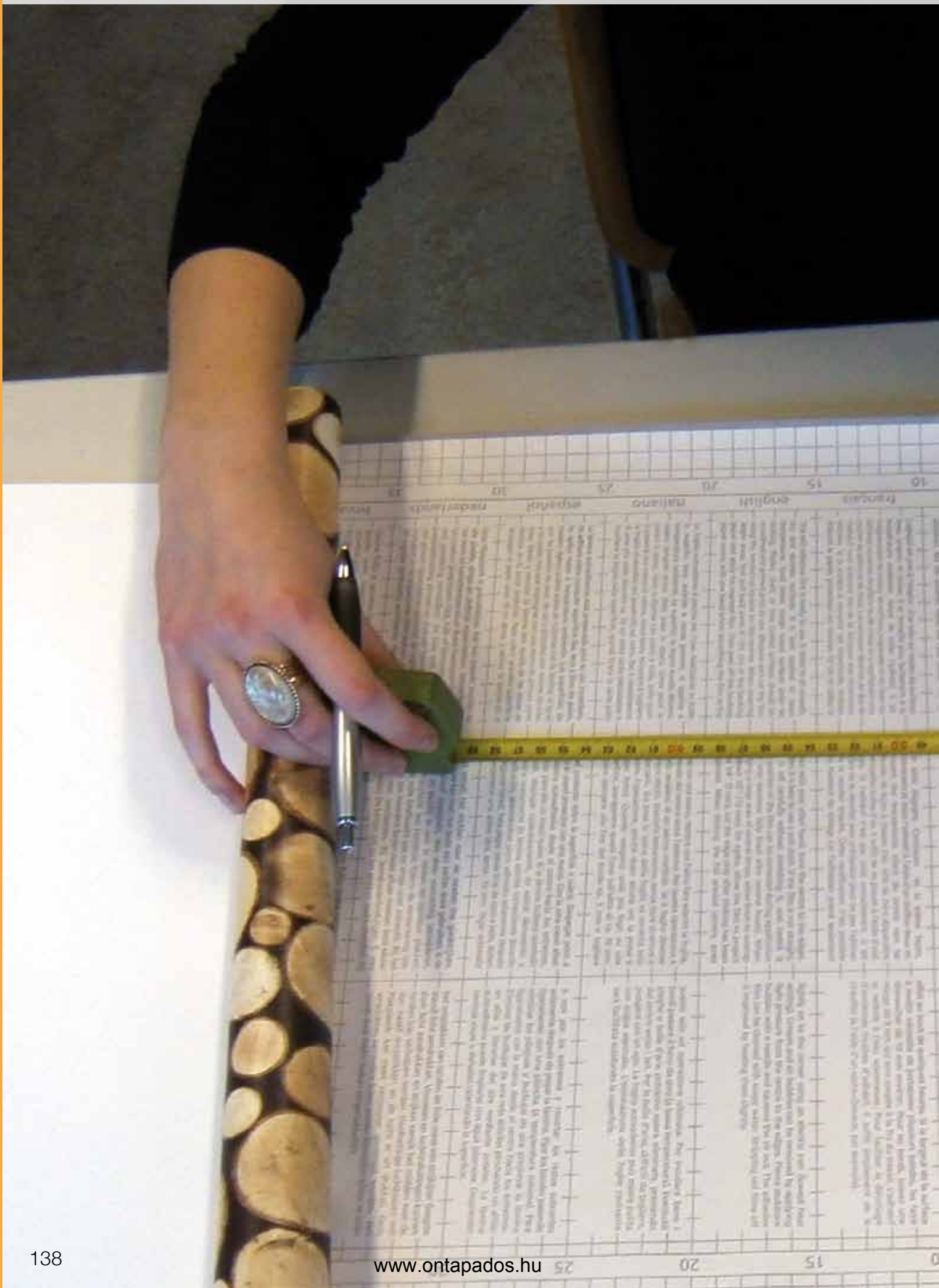
BRICK BLACK



cm ↔	m	m	m	m
45	2	10222	15	10221
67,5			15	10675
90	2	10678	15	10677

cm ↔	m	m	m	m
45	2	13564	15	13565

# USER INSTRUCTIONS



# USER INSTRUCTIONS SELF ADHESIVE FOIL

## ATTENTION:

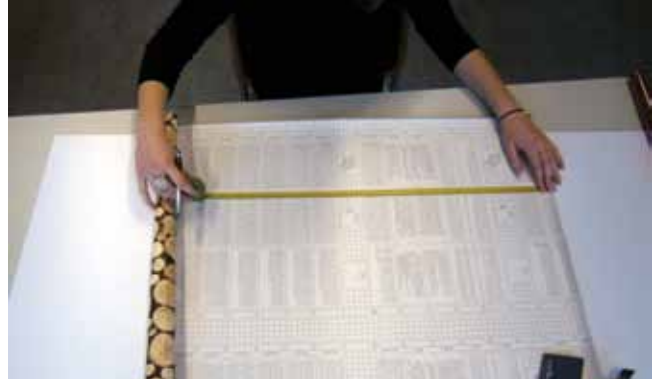
- Do not apply the film at or below a temperature of 5 °C.
- The film is only suitable for indoor use

### STEP 1



Carefully clean the surface of the section to be applied, making sure it is dust-free and smooth.

### STEP 2



Cut the film to a slightly larger size than the area to be covered.

### STEP 3



Peel the protective layer of the film. It may help to spray the surface to be covered with water.

### STEP 4



Apply the film to the surface of the section to be applied, making sure to position it carefully.

### STEP 5



Use a wiper to smooth out the film starting in the middle in order to remove air and moisture from in between the surface and the film.

### STEP 6



Remove excess film using a sharp knife along a ruler or straight edge and then smooth over.

- Aus drucktechnischen Gründen müssen wir uns Farbeabweichungen der Dessins vorbehalten.  
Alle abgebildeten Holzmuster sind Reproduktionen.
- Pour des raisons d'impression, nous réservons des déviations de couleur des dessins.  
Tous les dessins sont des reproductions.
- For printing reasons colour differences of the dessins of the design must be reserved.  
All patterns are reproductions.
- Per motivi tecnici di stampa, i colori dei disegni potrebbero risultare sfalsati.  
Tutti i disegni dei legni sono riproduzioni.
- Por razones técnicas de impresión nos reservamos diferencias en los colores de los diseños.  
Todas las maderas que aparecen son reproducciones.
- Ввиду особенностей технологического процесса допускаются некоторые изменения оттенков



**VAN MERKSTEIJN**  
**PLASTICS**



Van Merksteijn Plastics B.V.  
Verzetslaan 20  
P.O. Box 1350  
NL-7500 BJ Enschede

**T** +31 (0) 53 428 99 00  
**F** +31 (0) 53 428 92 00  
**E** [info@vanmerksteijnplastics.nl](mailto:info@vanmerksteijnplastics.nl)  
**W** [www.gekkofix.nl](http://www.gekkofix.nl)